

## Product datasheet for **TA357368**

### C3orf37 (HMCEs) Rabbit Polyclonal Antibody

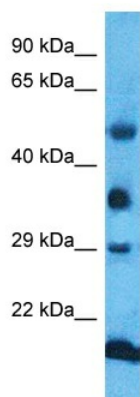
#### Product data:

Product Type:	Primary Antibodies
Applications:	WB
Reactivity:	Human
Host:	Rabbit
Clonality:	Polyclonal
Immunogen:	The immunogen is a synthetic peptide directed towards the N-terminal region of Human HMCEs
Specificity:	<b>Expected reactivity:</b> Cow, Dog, Horse, Human, Mouse, Pig, Rabbit, Rat, Zebrafish <b>Homology:</b> Cow: 85%; Dog: 92%; Horse: 85%; Human: 100%; Mouse: 92%; Pig: 77%; Rabbit: 92%; Rat: 92%; Zebrafish: 92%
Formulation:	Liquid. Purified antibody supplied in 1x PBS buffer with 0.09% (w/v) sodium azide and 2% sucrose. <i>Note that this product is shipped as lyophilized powder to China customers.</i>
Concentration:	lot specific
Purification:	Affinity purified
Conjugation:	Unconjugated
Storage:	For short term use, store at 2-8°C up to 1 week. For long term storage, store at -20°C in small aliquots to prevent freeze-thaw cycles.
Stability:	Shelf life: one year from despatch.
Predicted Protein Size:	38kDa
Gene Name:	5-hydroxymethylcytosine (hmC) binding, ES cell-specific
Database Link:	<a href="#">XP_005247693</a> <a href="#">Entrez Gene 56941 Human</a> <a href="#">Q96FZ2</a>
Background:	HMCEs specifically binds 5-hydroxymethylcytosine (5hmC)- containing DNA in stem cells, suggesting that it acts as a specific reader of 5hmC in stem cells (By similarity). IT may act as a peptidase; experimental evidences are however required to confirm this prediction.



[View online »](#)

## Product images:



Host: Rabbit  
Target Name: HMCEs  
Sample Tissue: Lung Tumor Lysate  
Antibody Dilution: 1.0 $\mu$ g/ml

Host: Rabbit  
Target Name: HMCEs  
Sample Type: Lung Tumor lysates  
Antibody Dilution: 1.0 $\mu$ g/ml