

## Product datasheet for **TA357366**

### Ccnj Rabbit Polyclonal Antibody

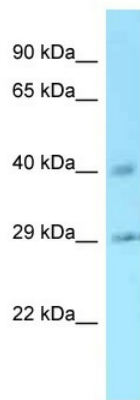
#### Product data:

Product Type:	Primary Antibodies
Applications:	WB
Reactivity:	Rat
Host:	Rabbit
Clonality:	Polyclonal
Specificity:	<b>Expected reactivity:</b> Cow, Dog, Guinea Pig, Horse, Human, Mouse, Rabbit, Rat <b>Homology:</b> Cow: 93%; Dog: 93%; Guinea Pig: 100%; Horse: 93%; Human: 100%; Mouse: 100%; Rabbit: 93%; Rat: 100%
Formulation:	Liquid. Purified antibody supplied in 1x PBS buffer with 0.09% (w/v) sodium azide and 2% sucrose.
Concentration:	lot specific
Purification:	Affinity Purified
Conjugation:	Unconjugated
Storage:	For short term use, store at 2-8°C up to 1 week. For long term storage, store at -20°C in small aliquots to prevent freeze-thaw cycles.
Stability:	Shelf life: one year from despatch.
Predicted Protein Size:	41kDa
Gene Name:	cyclin J
Database Link:	<a href="#">NP_001099839</a> <a href="#">Entrez Gene 294053 Rat</a> <a href="#">D4A1H5</a>
Background:	The function of this protein is unknown.
Synonyms:	bA690P14.1; FLJ10895

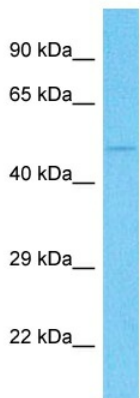


[View online »](#)

Product images:



WB Suggested Anti-Ccnj Antibody  
Titration: 1.0 ug/ml  
Positive Control: Rat Liver



Host: Rabbit  
Target Name: CCNJ  
Sample Type: Rat Skeletal Muscle Lysate  
Antibody Dilution: 1.0µg/ml

Host: Rabbit  
Target Name: CCNJ  
Sample Tissue: Rat Rat Skeletal Muscle  
Antibody Dilution: 1ug/ml