

Product datasheet for **TA357364**

CCDC76 (TRMT13) Rabbit Polyclonal Antibody

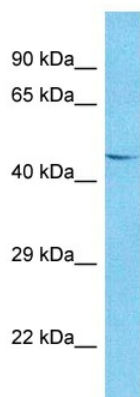
Product data:

Product Type:	Primary Antibodies
Applications:	WB
Reactivity:	Human
Host:	Rabbit
Clonality:	Polyclonal
Immunogen:	The immunogen is a synthetic peptide directed towards the N-terminal region of Human TRM13
Specificity:	Expected reactivity: Cow, Guinea Pig, Horse, Human, Mouse, Pig, Rabbit, Rat, Yeast, Zebrafish Homology: Cow: 93%; Guinea Pig: 92%; Horse: 100%; Human: 100%; Mouse: 79%; Pig: 100%; Rabbit: 93%; Rat: 93%; Yeast: 90%; Zebrafish: 93%
Formulation:	Liquid. Purified antibody supplied in 1x PBS buffer with 0.09% (w/v) sodium azide and 2% sucrose. <i>Note that this product is shipped as lyophilized powder to China customers.</i>
Concentration:	lot specific
Purification:	Affinity purified
Conjugation:	Unconjugated
Storage:	For short term use, store at 2-8°C up to 1 week. For long term storage, store at -20°C in small aliquots to prevent freeze-thaw cycles.
Stability:	Shelf life: one year from despatch.
Predicted Protein Size:	52kDa
Gene Name:	tRNA methyltransferase 13 homolog
Database Link:	NP_061956 Entrez Gene 54482 Human Q9NUP7
Synonyms:	4631408H19Rik; A330067P21; A930028L21Rik; Ccdc76



[View online »](#)

Product images:



Host: Rabbit
Target Name: TRM13
Sample Tissue: U937 Cell Lysate
Antibody Dilution: 1.0 μ g/ml

Host: Rabbit
Target Name: TRM13
Sample Type: U937 Whole Cell lysates
Antibody Dilution: 1.0ug/ml