

Product datasheet for **TA357363**

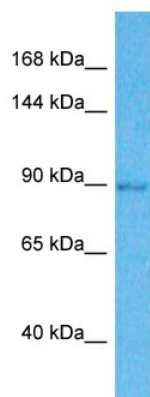
FAM35A Rabbit Polyclonal Antibody

Product data:

| | |
|-------------------------|--|
| Product Type: | Primary Antibodies |
| Applications: | WB |
| Reactivity: | Human |
| Host: | Rabbit |
| Clonality: | Polyclonal |
| Immunogen: | The immunogen is a synthetic peptide directed towards the C-terminal region of Human FAM35A |
| Specificity: | Expected reactivity: Cow, Guinea Pig, Horse, Human, Mouse, Pig, Rabbit, Rat Homology: Cow: 100%; Guinea Pig: 86%; Horse: 100%; Human: 100%; Mouse: 100%; Pig: 100%; Rabbit: 100%; Rat: 100% |
| Formulation: | Liquid. Purified antibody supplied in 1x PBS buffer with 0.09% (w/v) sodium azide and 2% sucrose. |
| Concentration: | lot specific |
| Purification: | Affinity Purified |
| Conjugation: | Unconjugated |
| Storage: | For short term use, store at 2-8°C up to 1 week. For long term storage, store at -20°C in small aliquots to prevent freeze-thaw cycles. |
| Stability: | Shelf life: one year from despatch. |
| Predicted Protein Size: | 91kDa |
| Gene Name: | family with sequence similarity 35 member A |
| Database Link: | NP_061927 Entrez Gene 54537 Human Q86V20 |
| Synonyms: | bA163M19.1; FAM35A1; MGC5560; OTTHUMP00000020021 |



[View online »](#)

Product images:

Host: Rabbit
Target Name: FAM35A
Sample Tissue: Lung Tumor Lysate
Antibody Dilution: 1.0 μ g/ml

Host: Rabbit
Target Name: FAM35A
Sample Type: Lung Tumor lysates
Antibody Dilution: 1.0ug/ml