

## Product datasheet for **TA357352**

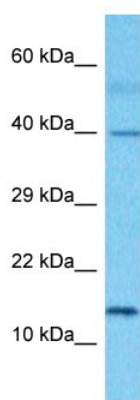
### LRRC20 Rabbit Polyclonal Antibody

#### Product data:

Product Type:	Primary Antibodies
Applications:	WB
Reactivity:	Human
Host:	Rabbit
Clonality:	Polyclonal
Immunogen:	The immunogen is a synthetic peptide directed towards the N-terminal region of Human LRC20
Specificity:	<b>Expected reactivity:</b> Cow, Dog, Goat, Guinea Pig, Horse, Human, Mouse, Rabbit, Rat <b>Homology:</b> Cow: 100%; Dog: 100%; Goat: 93%; Guinea Pig: 100%; Horse: 100%; Human: 100%; Mouse: 100%; Rabbit: 100%; Rat: 93%
Formulation:	Liquid. Purified antibody supplied in 1x PBS buffer with 0.09% (w/v) sodium azide and 2% sucrose.
Concentration:	lot specific
Purification:	Affinity purified
Conjugation:	Unconjugated
Storage:	For short term use, store at 2-8°C up to 1 week. For long term storage, store at -20°C in small aliquots to prevent freeze-thaw cycles.
Stability:	Shelf life: one year from despatch.
Predicted Protein Size:	14kDa
Gene Name:	leucine rich repeat containing 20
Database Link:	<a href="#">Entrez Gene 55222 Human Q8TCA0-2</a>
Synonyms:	FLJ10751; FLJ10844; OTTHUMP00000019750; OTTHUMP00000035622



[View online »](#)

**Product images:**


Host: Rabbit  
 Target Name: LRC20  
 Sample Tissue: Thymus Tumor Lysate  
 Antibody Dilution: 1.0µg/ml

Host: Rabbit  
 Target Name: LRC20  
 Sample Type: Thymus Tumor lysates  
 Antibody Dilution: 1.0ug/ml