

Product datasheet for **TA357335**

HSPC014 (POMP) Rabbit Polyclonal Antibody

Product data:

Product Type:	Primary Antibodies
Applications:	WB
Reactivity:	Human
Host:	Rabbit
Clonality:	Polyclonal
Immunogen:	The immunogen is a synthetic peptide directed towards the C-terminal region of Human POMP
Specificity:	Expected reactivity: Cow, Dog, Guinea Pig, Horse, Human, Mouse, Rabbit, Rat, Zebrafish Homology: Cow: 100%; Dog: 100%; Guinea Pig: 100%; Horse: 93%; Human: 100%; Mouse: 100%; Rabbit: 100%; Rat: 100%; Zebrafish: 86%
Formulation:	Liquid. Purified antibody supplied in 1x PBS buffer with 0.09% (w/v) sodium azide and 2% sucrose. <i>Note that this product is shipped as lyophilized powder to China customers.</i>
Concentration:	lot specific
Purification:	Affinity Purified
Conjugation:	Unconjugated
Storage:	For short term use, store at 2-8°C up to 1 week. For long term storage, store at -20°C in small aliquots to prevent freeze-thaw cycles.
Stability:	Shelf life: one year from despatch.
Predicted Protein Size:	15kDa
Gene Name:	proteasome maturation protein
Database Link:	NP_057016 Entrez Gene 51371 Human Q9Y244



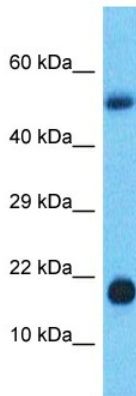
[View online »](#)

Background:

The protein encoded by this gene is a molecular chaperone that binds 20S preproteasome components and is essential for 20S proteasome formation. The 20S proteasome is the proteolytically active component of the 26S proteasome complex. The encoded protein is degraded before the maturation of the 20S proteasome is complete. A variant in the 5' UTR of this gene has been associated with KLICK syndrome, a rare skin disorder.

Synonyms:

2510048O06Rik; C13orf12; HSPC014; hUMP1; PNAS-110; Proteasemblin; UMP1

Product images:


Host: Rabbit
 Target Name: POMP
 Sample Tissue: Stomach Tumor Lysate
 Antibody Dilution: 1.0µg/ml

Host: Rabbit
 Target Name: POMP
 Sample Type: Stomach Tumor lysates
 Antibody Dilution: 1.0ug/ml