

Product datasheet for TA357331

Protor 1 (PRR5) Rabbit Polyclonal Antibody

Product data:

| | |
|-------------------------|--|
| Product Type: | Primary Antibodies |
| Applications: | WB |
| Reactivity: | Human |
| Host: | Rabbit |
| Clonality: | Polyclonal |
| Immunogen: | The immunogen is a synthetic peptide directed towards the N terminal region of human PRR5 |
| Specificity: | Expected reactivity: Cow, Dog, Guinea Pig, Horse, Human, Mouse, Rabbit, Rat Homology: Cow: 100%; Dog: 100%; Guinea Pig: 100%; Horse: 100%; Human: 100%; Mouse: 93%; Rabbit: 100%; Rat: 100% |
| Formulation: | Liquid. Purified antibody supplied in 1x PBS buffer with 0.09% (w/v) sodium azide and 2% sucrose. <i>Note that this product is shipped as lyophilized powder to China customers.</i> |
| Concentration: | lot specific |
| Purification: | Affinity Purified |
| Conjugation: | Unconjugated |
| Storage: | For short term use, store at 2-8°C up to 1 week. For long term storage, store at -20°C in small aliquots to prevent freeze-thaw cycles. |
| Stability: | Shelf life: one year from despatch. |
| Predicted Protein Size: | 41kDa |
| Gene Name: | proline rich 5 |
| Database Link: | NP_056181 Entrez Gene 55615 Human B3KRM4 |



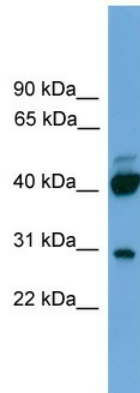
[View online »](#)

Background:

This gene encodes a protein with a proline-rich domain. This gene is located in a region of chromosome 22 reported to contain a tumor suppressor gene that may be involved in breast and colorectal tumorigenesis. Rare read-through transcripts, containing exons from the ARHGAP8 gene which is located immediately downstream, led to the original description of PRR5 and ARHGAP8 as a single gene. Alternative splicing and the use of alternative promoters results in transcripts encoding different isoforms.

Synonyms:

FLJ20185; FLJ20185k; PP610; protor-1; PROTOR1

Product images:

WB Suggested Anti-PRR5 Antibody Titration: 0.2-1 ug/ml
Positive Control: COLO205 cell lysate PRR5 is supported by BioGPS gene expression data to be expressed in COLO205