

## Product datasheet for **TA357329**

### PPP2R1A Rabbit Polyclonal Antibody

#### Product data:

|                         |  |
|-------------------------|--|
| Product Type:           | Primary Antibodies   |
| Applications:           | WB   |
| Reactivity:             | Human, Mouse   |
| Host:                   | Rabbit   |
| Clonality:              | Polyclonal   |
| Immunogen:              | The immunogen is a synthetic peptide directed towards the N terminal region of human PPP2R1A   |
| Specificity:            | <b>Expected reactivity:</b> Cow, Dog, Guinea Pig, Horse, Human, Mouse, Rat, Zebrafish<br><b>Homology:</b> Cow: 100%; Dog: 100%; Guinea Pig: 100%; Horse: 100%; Human: 100%; Mouse: 100%; Rat: 100%; Zebrafish: 85% |
| Formulation:            | Liquid. Purified antibody supplied in 1x PBS buffer with 0.09% (w/v) sodium azide and 2% sucrose.<br><i>Note that this product is shipped as lyophilized powder to China customers.</i>                            |
| Concentration:          | lot specific   |
| Purification:           | Affinity Purified  |
| Conjugation:            | Unconjugated   |
| Storage:                | For short term use, store at 2-8°C up to 1 week. For long term storage, store at -20°C in small aliquots to prevent freeze-thaw cycles.  |
| Stability:              | Shelf life: one year from despatch.  |
| Predicted Protein Size: | 65kDa  |
| Gene Name:              | protein phosphatase 2 scaffold subunit Aalpha  |
| Database Link:          | <a href="#">NP_055040</a><br><a href="#">Entrez Gene 51792 Mouse</a> <a href="#">Entrez Gene 5518 Human</a><br><a href="#">P30153</a>  |



[View online »](#)

**Background:**

PPP2R1A is a constant regulatory subunit of protein phosphatase 2. Protein phosphatase 2 is one of the four major Ser/Thr phosphatases, and it is implicated in the negative control of cell growth and division. It consists of a common heteromeric core enzyme, which is composed of a catalytic subunit and a constant regulatory subunit, that associates with a variety of regulatory subunits. The constant regulatory subunit A serves as a scaffolding molecule to coordinate the assembly of the catalytic subunit and a variable regulatory B subunit. PPP2R1A is an alpha isoform of the constant regulatory subunit A. This gene encodes a constant regulatory subunit of protein phosphatase 2. Protein phosphatase 2 is one of the four major Ser/Thr phosphatases, and it is implicated in the negative control of cell growth and division. It consists of a common heteromeric core enzyme, which is composed of a catalytic subunit and a constant regulatory subunit, that associates with a variety of regulatory subunits. The constant regulatory subunit A serves as a scaffolding molecule to coordinate the assembly of the catalytic subunit and a variable regulatory B subunit. This gene encodes an alpha isoform of the constant regulatory subunit A. Publication Note: This RefSeq record includes a subset of the publications that are available for this gene. Please see the Entrez Gene record to access additional publications.

**Synonyms:**

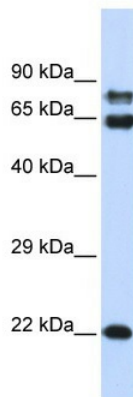
MGC786; PR65A

**Protein Families:**

Druggable Genome, Phosphatase, Transcription Factors

**Protein Pathways:**

Long-term depression, Oocyte meiosis, TGF-beta signaling pathway, Tight junction, Wnt signaling pathway

**Product images:**

WB Suggested Anti-PPP2R1A Antibody Titration:  
0.2-1 ug/ml  
ELISA Titer: 1:1562500  
Positive Control: 293T cell lysate



Host: Rabbit  
Target Name: Ppp2r1a  
Sample Type: Mouse Testis Lysate  
Antibody Dilution: 1.0µg/ml

Host: Mouse  
Target Name: PPP2R1A  
Sample Tissue: Mouse Testis  
Antibody Dilution: 1 µg/ml