

Product datasheet for **TA357324**

SGK1 Rabbit Polyclonal Antibody

Product data:

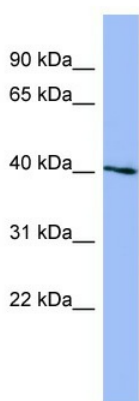
Product Type:	Primary Antibodies
Applications:	IHC, WB
Reactivity:	Human, Mouse
Host:	Rabbit
Clonality:	Polyclonal
Immunogen:	The immunogen is a synthetic peptide directed towards the N terminal region of human SGK1
Specificity:	Expected reactivity: Cow, Dog, Guinea Pig, Horse, Human, Mouse, Rabbit, Rat, Zebrafish Homology: Cow: 100%; Dog: 100%; Guinea Pig: 100%; Horse: 100%; Human: 100%; Mouse: 100%; Rabbit: 100%; Rat: 100%; Zebrafish: 92%
Formulation:	Liquid. Purified antibody supplied in 1x PBS buffer with 0.09% (w/v) sodium azide and 2% sucrose. <i>Note that this product is shipped as lyophilized powder to China customers.</i>
Concentration:	lot specific
Purification:	Affinity Purified
Conjugation:	Unconjugated
Storage:	For short term use, store at 2-8°C up to 1 week. For long term storage, store at -20°C in small aliquots to prevent freeze-thaw cycles.
Stability:	Shelf life: one year from despatch.
Predicted Protein Size:	49kDa
Gene Name:	serum/glucocorticoid regulated kinase 1
Database Link:	NP_005618 Entrez Gene 20393 Mouse Entrez Gene 6446 Human O00141
Background:	This gene encodes a serine/threonine protein kinase that plays an important role in cellular stress response. This kinase activates certain potassium, sodium, and chloride channels, suggesting an involvement in the regulation of processes such as cell sur
Synonyms:	SGK



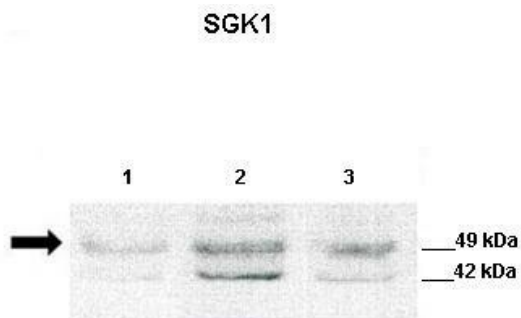
[View online »](#)

Protein Families: Druggable Genome, Protein Kinase

Product images:

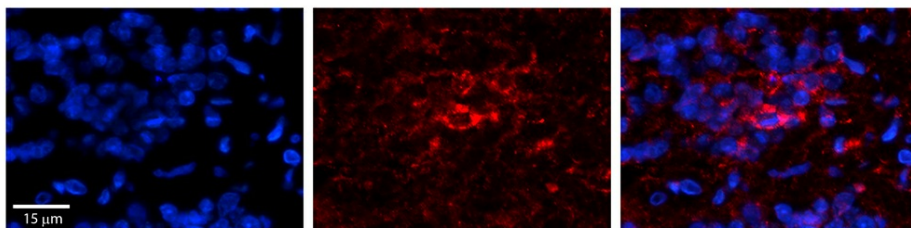


WB Suggested Anti-SGK1 Antibody Titration: 0.2-1 ug/ml
 ELISA Titer: 1:312500
 Positive Control: HepG2 cell lysate
 SGK1 is supported by BioGPS gene expression data to be expressed in HepG2

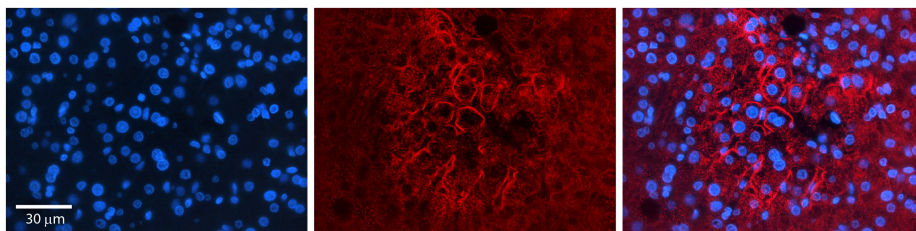


Lanes:
 Lane 1: 30ug mouse renal epithelial lysate
 Lane 2: 30ug mouse renal epithelial lysate
 Lane 3: 30ug mouse renal epithelial lysate
 Primary Antibody Dilution:
 1:500
 Secondary Antibody:
 Anti-rabbit-HRP
 Secondary Antibody Dilution:
 1:2500
 Gene Name:
 SGK1
 Submitted by:
 Dr. JUNMING FAN, ECU

See Immunoblot 2 Data and Customer Feedback for more Information



Rabbit Anti-SGK1 Antibody
 Catalog Number: TA357324
 Formalin Fixed Paraffin Embedded Tissue:
 Human Pineal Tissue
 Observed Staining: Cytoplasmic in cell bodies and processes of pinealocytes
 Primary Antibody Concentration: 1:100
 Other Working Concentrations: 1/600
 Secondary Antibody: Donkey anti-Rabbit-Cy3
 Secondary Antibody Concentration: 1:200
 Magnification: 20X
 Exposure Time: 0.5–2.0 sec



Rabbit Anti-SGK1 Antibody
Catalog Number: TA357324
Formalin Fixed Paraffin Embedded Tissue:
Human Liver Tissue
Observed Staining: Cytoplasm and plasma
membrane in sinusoids
Primary Antibody Concentration: 1:100
Other Working Concentrations: N/A
Secondary Antibody: Donkey anti-Rabbit-Cy3
Secondary Antibody Concentration: 1:200
Magnification: 20X
Exposure Time: 0.5–2.0 sec