

Product datasheet for **TA357315**

Rab27b Rabbit Polyclonal Antibody

Product data:

Product Type:	Primary Antibodies
Applications:	WB
Reactivity:	Human, Mouse
Host:	Rabbit
Clonality:	Polyclonal
Specificity:	Expected reactivity: Cow, Dog, Guinea Pig, Horse, Human, Mouse, Rabbit, Rat, Zebrafish Homology: Cow: 100%; Dog: 100%; Guinea Pig: 100%; Horse: 100%; Human: 100%; Mouse: 100%; Rabbit: 100%; Rat: 100%; Zebrafish: 79%
Formulation:	Liquid. Purified antibody supplied in 1x PBS buffer with 0.09% (w/v) sodium azide and 2% sucrose. <i>Note that this product is shipped as lyophilized powder to China customers.</i>
Concentration:	lot specific
Purification:	Affinity Purified
Conjugation:	Unconjugated
Storage:	For short term use, store at 2-8°C up to 1 week. For long term storage, store at -20°C in small aliquots to prevent freeze-thaw cycles.
Stability:	Shelf life: one year from despatch.
Predicted Protein Size:	24kDa
Gene Name:	RAB27B, member RAS oncogene family
Database Link:	NP_085031 Entrez Gene 80718 Mouse Q99P58
Background:	Rab27b may be involved in targeting uroplakins to urothelial apical membranes.
Synonyms:	C25KG

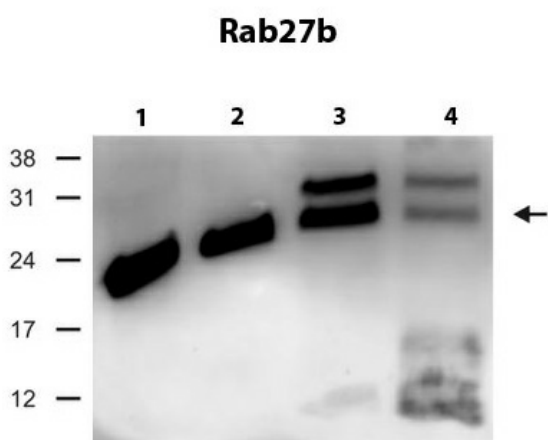


[View online »](#)

Product images:



Rab27b antibody - C-terminal region (TA357315) validated by WB using Mouse Heart lysate at 1ug/ml.



WB Suggested Anti-Rab27b Antibody Titration: 0.5 ug/ml
 Positive Control: human testis, mouse liver, brain and testis