

Product datasheet for **TA357314**

Rab27a Rabbit Polyclonal Antibody

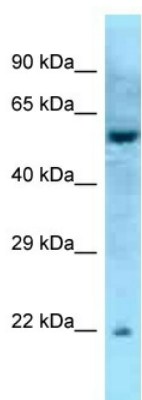
Product data:

Product Type:	Primary Antibodies
Applications:	WB
Reactivity:	Mouse
Host:	Rabbit
Clonality:	Polyclonal
Specificity:	Expected reactivity: Cow, Dog, Goat, Guinea Pig, Horse, Human, Mouse, Rabbit, Rat, Sheep, Zebrafish Homology: Cow: 100%; Dog: 100%; Goat: 86%; Guinea Pig: 100%; Horse: 100%; Human: 100%; Mouse: 100%; Rabbit: 100%; Rat: 100%; Sheep: 86%; Zebrafish: 100%
Formulation:	Liquid. Purified antibody supplied in 1x PBS buffer with 0.09% (w/v) sodium azide and 2% sucrose. <i>Note that this product is shipped as lyophilized powder to China customers.</i>
Concentration:	lot specific
Purification:	Affinity Purified
Conjugation:	Unconjugated
Storage:	For short term use, store at 2-8°C up to 1 week. For long term storage, store at -20°C in small aliquots to prevent freeze-thaw cycles.
Stability:	Shelf life: one year from despatch.
Predicted Protein Size:	24kDa
Gene Name:	RAB27A, member RAS oncogene family
Database Link:	NP_076124 Entrez Gene 11891 Mouse Q9ERI2
Background:	Rab27a plays a role in cytotoxic granule exocytosis in lymphocytes. It is required for both granule maturation and granule docking and priming at the immunologic synapse.
Synonyms:	GS2; HsT18676; MGC117246; Rab-27; RAB27; RAM



[View online »](#)

Product images:



Rabbit Anti-Rab27a Antibody

Lot Number: QC27616

Lane: Mouse Pancreas Lysate

Antibody Titration: 1.0 μ g/ml

Gel Concentration: 12%

Host: Rabbit

Target Name: Rab27a

Sample Type: Mouse Pancreas

Antibody Dilution: 1.0ug/ml