

Product datasheet for **TA357308**

Twf1 Rabbit Polyclonal Antibody

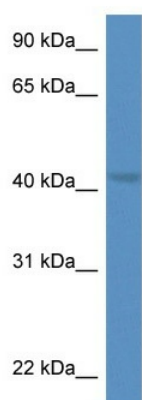
Product data:

Product Type:	Primary Antibodies
Applications:	WB
Reactivity:	Rat
Host:	Rabbit
Clonality:	Polyclonal
Specificity:	Expected reactivity: Cow, Dog, Guinea Pig, Horse, Human, Mouse, Rabbit, Rat, Zebrafish Homology: Cow: 93%; Dog: 100%; Guinea Pig: 100%; Horse: 100%; Human: 100%; Mouse: 100%; Rabbit: 100%; Rat: 100%; Zebrafish: 93%
Formulation:	Liquid. Purified antibody supplied in 1x PBS buffer with 0.09% (w/v) sodium azide and 2% sucrose. <i>Note that this product is shipped as lyophilized powder to China customers.</i>
Concentration:	lot specific
Purification:	Affinity Purified
Conjugation:	Unconjugated
Storage:	For short term use, store at 2-8°C up to 1 week. For long term storage, store at -20°C in small aliquots to prevent freeze-thaw cycles.
Stability:	Shelf life: one year from despatch.
Predicted Protein Size:	40kDa
Gene Name:	twinfilin actin-binding protein 1
Database Link:	NP_001008521 Entrez Gene 315265 Rat Q5RJR2
Background:	Twf1 is an actin-binding protein involved in motile and morphological processes. It inhibits actin polymerization, likely by sequestering G-actin. By capping the barbed ends of filaments, it also regulates motility. It seems to play an important role in clathrin-mediated endocytosis and distribution of endocytic organelles.
Synonyms:	A6; MGC23788; MGC41876; PTK9



[View online »](#)

Product images:



WB Suggested Anti-Twf1 Antibody
Titration: 1.0 ug/ml
Positive Control: Rat Brain