

## Product datasheet for **TA357304**

### Psma2 Rabbit Polyclonal Antibody

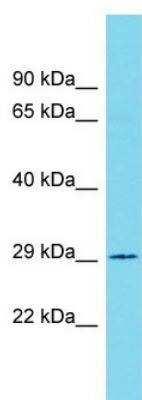
#### Product data:

|                         |   |
|-------------------------|---|
| Product Type:           | Primary Antibodies  |
| Applications:           | WB  |
| Reactivity:             | Rat   |
| Host:                   | Rabbit  |
| Clonality:              | Polyclonal  |
| Immunogen:              | The immunogen is a synthetic peptide directed towards the C-terminal region of Rat Psma2  |
| Specificity:            | <b>Expected reactivity:</b> Cow, Dog, Guinea Pig, Horse, Human, Mouse, Rabbit, Rat, Sheep, Zebrafish<br><b>Homology:</b> Cow: 100%; Dog: 93%; Guinea Pig: 100%; Horse: 100%; Human: 100%; Mouse: 100%; Rabbit: 100%; Rat: 100%; Sheep: 100%; Zebrafish: 93% |
| Formulation:            | Liquid. Purified antibody supplied in 1x PBS buffer with 0.09% (w/v) sodium azide and 2% sucrose.<br><i>Note that this product is shipped as lyophilized powder to China customers.</i>   |
| Concentration:          | lot specific  |
| Purification:           | Affinity Purified   |
| Conjugation:            | Unconjugated  |
| Storage:                | For short term use, store at 2-8°C up to 1 week. For long term storage, store at -20°C in small aliquots to prevent freeze-thaw cycles.   |
| Stability:              | Shelf life: one year from despatch.   |
| Predicted Protein Size: | 25kDa   |
| Gene Name:              | proteasome subunit alpha 2  |
| Database Link:          | <a href="#">NP_058975</a><br><a href="#">Entrez Gene 29669 Rat P17220</a>   |
| Background:             | Psma2 is a component of the proteasome multicatalytic proteinase complex.   |
| Synonyms:               | HC3; MU; OTTHUMP00000207364; PMSA2; PSC2; PSC3  |



[View online »](#)

Product images:



Host: Rabbit  
Target Name: Psma2  
Sample Type: Rat Lung lysates  
Antibody Dilution: 1.0ug/ml