

## Product datasheet for **TA357302**

### MAPK11 Rabbit Polyclonal Antibody

#### Product data:

|                         |   |
|-------------------------|---|
| Product Type:           | Primary Antibodies  |
| Applications:           | WB  |
| Reactivity:             | Human   |
| Host:                   | Rabbit  |
| Clonality:              | Polyclonal  |
| Immunogen:              | The immunogen is a synthetic peptide directed towards the N-terminal region of Human MK11   |
| Specificity:            | <b>Expected reactivity:</b> Cow, Human, Mouse, Rat, Zebrafish<br><b>Homology:</b> Cow: 100%; Human: 100%; Mouse: 100%; Rat: 100%; Zebrafish: 91%  |
| Formulation:            | Liquid. Purified antibody supplied in 1x PBS buffer with 0.09% (w/v) sodium azide and 2% sucrose.<br><i>Note that this product is shipped as lyophilized powder to China customers.</i> |
| Concentration:          | lot specific  |
| Purification:           | Affinity Purified   |
| Conjugation:            | Unconjugated  |
| Storage:                | For short term use, store at 2-8°C up to 1 week. For long term storage, store at -20°C in small aliquots to prevent freeze-thaw cycles.   |
| Stability:              | Shelf life: one year from despatch.   |
| Predicted Protein Size: | 40kDa   |
| Gene Name:              | mitogen-activated protein kinase 11   |
| Database Link:          | <a href="#">NP_002742</a><br><a href="#">Entrez Gene 5600 Human</a><br><a href="#">Q15759</a>   |



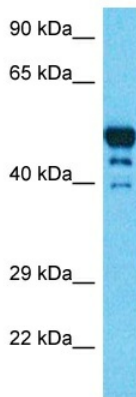
[View online »](#)

**Background:**

This gene encodes a member of a family of protein kinases that are involved in the integration of biochemical signals for a wide variety of cellular processes, including cell proliferation, differentiation, transcriptional regulation, and development. The encoded protein can be activated by proinflammatory cytokines and environmental stresses through phosphorylation by mitogen activated protein kinase kinases (MKKs). Alternative splicing results in multiple transcript variants.

**Synonyms:**

OTTHUMP00000196655; p38-2; P38B; p38Beta; P38BETA2; PRKM11; SAPK2; SAPK2B

**Product images:**

Host: Rabbit  
Target Name: MK11  
Sample Tissue: Lung Tumor Lysate  
Antibody Dilution: 1.0µg/ml

Host: Rabbit  
Target Name: MK11  
Sample Type: Lung Tumor lysates  
Antibody Dilution: 1.0ug/ml