

Product datasheet for **TA357301**

PPP1R7 Rabbit Polyclonal Antibody

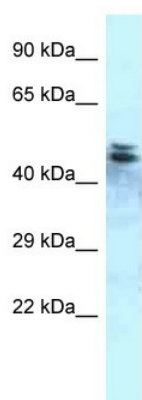
Product data:

Product Type:	Primary Antibodies
Applications:	WB
Reactivity:	Rat
Host:	Rabbit
Clonality:	Polyclonal
Specificity:	Expected reactivity: Cow, Dog, Guinea Pig, Human, Mouse, Pig, Rabbit, Rat, Zebrafish Homology: Cow: 93%; Dog: 100%; Guinea Pig: 86%; Human: 100%; Mouse: 100%; Pig: 100%; Rabbit: 100%; Rat: 100%; Zebrafish: 100%
Formulation:	Liquid. Purified antibody supplied in 1x PBS buffer with 0.09% (w/v) sodium azide and 2% sucrose.
Concentration:	lot specific
Purification:	Affinity Purified
Conjugation:	Unconjugated
Storage:	For short term use, store at 2-8°C up to 1 week. For long term storage, store at -20°C in small aliquots to prevent freeze-thaw cycles.
Stability:	Shelf life: one year from despatch.
Predicted Protein Size:	39kDa
Gene Name:	protein phosphatase 1, regulatory subunit 7
Database Link:	NP_001009825 Entrez Gene 301618 Rat Q5HZV9
Background:	PPP1R7 is a regulatory subunit of protein phosphatase 1.
Synonyms:	OTTHUMP00000200382; SDS22



[View online »](#)

Product images:



WB Suggested Anti-Ppp1r7 Antibody
Titration: 1.0 ug/ml
Positive Control: Rat Brain