

Product datasheet for **TA357299**

Atp6v1b1 Rabbit Polyclonal Antibody

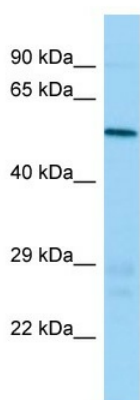
Product data:

| | |
|-------------------------|--|
| Product Type: | Primary Antibodies |
| Applications: | WB |
| Reactivity: | Mouse |
| Host: | Rabbit |
| Clonality: | Polyclonal |
| Immunogen: | The immunogen is a synthetic peptide directed towards the N-terminal region of Mouse Atp6v1b1 |
| Specificity: | Expected reactivity: Cow, Dog, Guinea Pig, Horse, Human, Mouse, Rabbit, Rat, Yeast, Zebrafish Homology: Cow: 93%; Dog: 100%; Guinea Pig: 100%; Horse: 93%; Human: 100%; Mouse: 100%; Rabbit: 93%; Rat: 100%; Yeast: 86%; Zebrafish: 93% |
| Formulation: | Liquid. Purified antibody supplied in 1x PBS buffer with 0.09% (w/v) sodium azide and 2% sucrose. <i>Note that this product is shipped as lyophilized powder to China customers.</i> |
| Concentration: | lot specific |
| Purification: | Affinity Purified |
| Conjugation: | Unconjugated |
| Storage: | For short term use, store at 2-8°C up to 1 week. For long term storage, store at -20°C in small aliquots to prevent freeze-thaw cycles. |
| Stability: | Shelf life: one year from despatch. |
| Predicted Protein Size: | 56kDa |
| Gene Name: | ATPase, H ⁺ transporting, lysosomal V1 subunit B1 |
| Database Link: | NP_598918 Entrez Gene 110935 Mouse Q91YH6 |
| Background: | The function of this protein remains unknown. |
| Synonyms: | ATP6B1; MGC32642; RTA1B; VATB; VMA2; VPP3 |



[View online »](#)

Product images:



Host: Rabbit
Target Name: Atp6v1b1
Sample Type: Mouse Testis lysates
Antibody Dilution: 1.0ug/ml