

Product datasheet for **TA357296**

Urgcp Rabbit Polyclonal Antibody

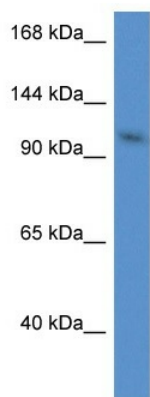
Product data:

Product Type:	Primary Antibodies
Applications:	WB
Reactivity:	Mouse
Host:	Rabbit
Clonality:	Polyclonal
Immunogen:	The immunogen is a synthetic peptide corresponding to a region of Mouse
Specificity:	Expected reactivity: Cow, Dog, Guinea Pig, Horse, Human, Mouse, Rabbit, Rat Homology: Cow: 85%; Dog: 90%; Guinea Pig: 100%; Horse: 92%; Human: 100%; Mouse: 100%; Rabbit: 92%; Rat: 100%
Formulation:	Liquid. Purified antibody supplied in 1x PBS buffer with 0.09% (w/v) sodium azide and 2% sucrose.
Concentration:	lot specific
Purification:	Affinity Purified
Conjugation:	Unconjugated
Storage:	For short term use, store at 2-8°C up to 1 week. For long term storage, store at -20°C in small aliquots to prevent freeze-thaw cycles.
Stability:	Shelf life: one year from despatch.
Predicted Protein Size:	100kDa
Gene Name:	upregulator of cell proliferation
Database Link:	NP_001071129 Entrez Gene 72046 Mouse Q5NCI0-2
Background:	Urgcp may be involved in cell cycle progression through the regulation of cyclin D1 expression.
Synonyms:	URG4



[View online »](#)

Product images:



WB Suggested Anti-Urgcp Antibody
Titration: 1.0 ug/ml
Positive Control: Mouse Heart