

Product datasheet for **TA357293**

SAR1 (SAR1A) Rabbit Polyclonal Antibody

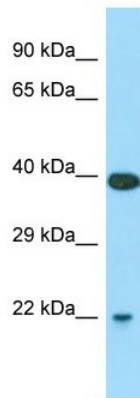
Product data:

Product Type:	Primary Antibodies
Applications:	WB
Reactivity:	Human, Mouse
Host:	Rabbit
Clonality:	Polyclonal
Immunogen:	The immunogen is a synthetic peptide directed towards the middle region of mouse SAR1A
Specificity:	Expected reactivity: Cow, Dog, Guinea Pig, Horse, Human, Mouse, Rabbit, Rat, Zebrafish Homology: Cow: 86%; Dog: 86%; Guinea Pig: 93%; Horse: 93%; Human: 100%; Mouse: 93%; Rabbit: 79%; Rat: 93%; Zebrafish: 86%
Formulation:	Liquid. Purified antibody supplied in 1x PBS buffer with 0.09% (w/v) sodium azide and 2% sucrose. <i>Note that this product is shipped as lyophilized powder to China customers.</i>
Concentration:	lot specific
Purification:	Affinity Purified
Conjugation:	Unconjugated
Storage:	For short term use, store at 2-8°C up to 1 week. For long term storage, store at -20°C in small aliquots to prevent freeze-thaw cycles.
Stability:	Shelf life: one year from despatch.
Predicted Protein Size:	21kDa
Gene Name:	secretion associated Ras related GTPase 1A
Database Link:	NP_001136120.1 Entrez Gene 20224 Mouse Entrez Gene 56681 Human Q9NR31
Synonyms:	masra2; OTTHUMP00000019744; OTTHUMP00000019745; OTTHUMP00000019748; SAR1; Sara; SARA1

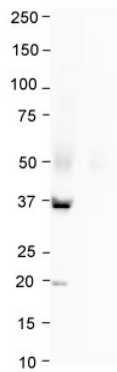


[View online »](#)

Product images:



Host: Rabbit
 Target Name: Sar1b
 Sample Type: Mouse Stomach lysates
 Antibody Dilution: 1.0ug/ml



Anti-SAR1B Western Blot & Peptide Block Validation

Lot Number: QC27175
 Sample Type: Human Thyroid
 Lane A: Primary Antibody
 Lane B: Primary Antibody + Blocking Peptide
 Primary Antibody Concentration: 1.0ug/ml
 Peptide Concentration: 2.0ug/ml
 Lysate Quantity: 25ug/lane

Host: Rabbit
 Target Name: SAR1B
 Sample Type: Human Thyroid
 Lane A: Primary Antibody
 Lane B: Primary Antibody + Blocking Peptide
 Primary Antibody Concentration: 1.0 ug/ml
 Peptide Concentration: 2.0 ug/ml
 Lysate Quantity: 25 ug/lane

A B