

Product datasheet for **TA357292**

Pde4b Rabbit Polyclonal Antibody

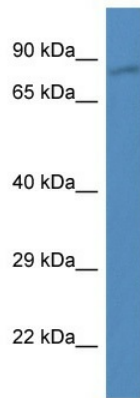
Product data:

Product Type:	Primary Antibodies
Applications:	WB
Reactivity:	Rat, Mouse
Host:	Rabbit
Clonality:	Polyclonal
Immunogen:	The immunogen is a synthetic peptide corresponding to a region of Mouse
Specificity:	Expected reactivity: Cow, Dog, Guinea Pig, Horse, Human, Mouse, Rabbit, Rat, Zebrafish Homology: Cow: 100%; Dog: 100%; Guinea Pig: 100%; Horse: 100%; Human: 100%; Mouse: 100%; Rabbit: 77%; Rat: 100%; Zebrafish: 86%
Formulation:	Liquid. Purified antibody supplied in 1x PBS buffer with 0.09% (w/v) sodium azide and 2% sucrose. <i>Note that this product is shipped as lyophilized powder to China customers.</i>
Concentration:	lot specific
Purification:	Affinity Purified
Conjugation:	Unconjugated
Storage:	For short term use, store at 2-8°C up to 1 week. For long term storage, store at -20°C in small aliquots to prevent freeze-thaw cycles.
Stability:	Shelf life: one year from despatch.
Predicted Protein Size:	82kDa
Gene Name:	phosphodiesterase 4B, cAMP specific
Database Link:	NP_062814 Entrez Gene 24626 Rat Entrez Gene 18578 Mouse Q9QX17
Background:	The function remains unknown.
Synonyms:	DKFZp686F2182; DPDE4; MGC126529; OTTHUMP00000010652; PDE4B5; PDE32; PDEIVB



[View online »](#)

Product images:



WB Suggested Anti-Pde4b Antibody
Titration: 1.0 ug/ml
Positive Control: Mouse Heart



Host: Rabbit
Target Name: Pde4B
Sample Type: Rat Skeletal Muscle Lysate
Antibody Dilution: 1.0µg/ml

Host: Rabbit
Target Name: PDE4B
Sample Tissue: Rat Skeletal Muscle
Antibody Dilution: 1ug/ml



Host: Rabbit
Target Name: Pde4B
Sample Type: Rat Skeletal Muscle Lysate
Antibody Dilution: 1.0 μ g/ml

Host: Rat
Target Name: PDE4B
Sample Tissue: Rat Skeletal Muscle
Antibody Dilution: 1 μ g/ml