

## Product datasheet for **TA357284**

### Rps6ka2 Rabbit Polyclonal Antibody

#### Product data:

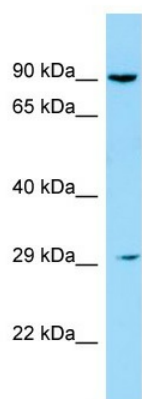
Product Type:	Primary Antibodies
Applications:	WB
Reactivity:	Mouse
Host:	Rabbit
Clonality:	Polyclonal
Immunogen:	The immunogen is a synthetic peptide directed towards the C-terminal region of Mouse Rps6ka2
Specificity:	<b>Expected reactivity:</b> Cow, Dog, Guinea Pig, Horse, Human, Mouse, Pig, Rabbit, Rat <b>Homology:</b> Cow: 93%; Dog: 93%; Guinea Pig: 86%; Horse: 93%; Human: 100%; Mouse: 93%; Pig: 93%; Rabbit: 86%; Rat: 93%
Formulation:	Liquid. Purified antibody supplied in 1x PBS buffer with 0.09% (w/v) sodium azide and 2% sucrose. <i>Note that this product is shipped as lyophilized powder to China customers.</i>
Concentration:	lot specific
Purification:	Affinity Purified
Conjugation:	Unconjugated
Storage:	For short term use, store at 2-8°C up to 1 week. For long term storage, store at -20°C in small aliquots to prevent freeze-thaw cycles.
Stability:	Shelf life: one year from despatch.
Predicted Protein Size:	81kDa
Gene Name:	ribosomal protein S6 kinase, polypeptide 2
Database Link:	<a href="#">NP_035429</a> <a href="#">Entrez Gene 20112 Mouse</a> <a href="#">Q9WUT3</a>
Background:	Rps6ka2 is a serine/threonine-protein kinase that acts downstream of ERK (MAPK1/ERK2 and MAPK3/ERK1) signaling and mediates mitogenic and stress-induced activation of transcription factors, regulates translation, and mediates cellular proliferation, survival, and differentiation. May function as tumor suppressor in epithelial ovarian cancer cells.



[View online »](#)

Synonyms: HU-2; MAPKAPK1C; p90-RSK3; pp90RSK3; RSK; RSK-3; RSK3; S6K-alpha; S6K-alpha2

### Product images:



Host: Rabbit  
Target Name: Rps6ka2  
Sample Type: Mouse Testis lysates  
Antibody Dilution: 1.0ug/ml