

Product datasheet for TA357280

PMS2 Rabbit Polyclonal Antibody

Product data:

Product Type:	Primary Antibodies
Applications:	WB
Reactivity:	Human
Host:	Rabbit
Clonality:	Polyclonal
Immunogen:	The immunogen is a synthetic peptide directed towards the middle region of human PMS2
Specificity:	Expected reactivity: Cow, Dog, Guinea Pig, Horse, Human, Rabbit, Rat, Yeast Homology: Cow: 85%; Dog: 92%; Guinea Pig: 100%; Horse: 92%; Human: 100%; Rabbit: 92%; Rat: 92%; Yeast: 91%
Formulation:	Liquid. Purified antibody supplied in 1x PBS buffer with 0.09% (w/v) sodium azide and 2% sucrose. <i>Note that this product is shipped as lyophilized powder to China customers.</i>
Concentration:	lot specific
Purification:	Affinity Purified
Conjugation:	Unconjugated
Storage:	For short term use, store at 2-8°C up to 1 week. For long term storage, store at -20°C in small aliquots to prevent freeze-thaw cycles.
Stability:	Shelf life: one year from despatch.
Predicted Protein Size:	96kDa
Gene Name:	PMS1 homolog 2, mismatch repair system component
Database Link:	NP_000526 Entrez Gene 5395 Human P54278



[View online »](#)

Background:

PMS2 is involved in DNA mismatch repair. It forms a heterodimer with MLH1 and this complex interacts with other complexes bound to mismatched bases. Mutations in this gene are associated with hereditary nonpolyposis colorectal cancer, Turcot syndrome, and are a cause of supratentorial primitive neuroectodermal tumors. This gene is one of the PMS2 gene family members found in clusters on chromosome 7. The product of this gene is involved in DNA mismatch repair. It forms a heterodimer with MLH1 and this complex interacts with other complexes bound to mismatched bases. Mutations in this gene are associated with hereditary nonpolyposis colorectal cancer, Turcot syndrome, and are a cause of supratentorial primitive neuroectodermal tumors. Alternatively spliced transcript variants have been observed for this gene.

Synonyms:

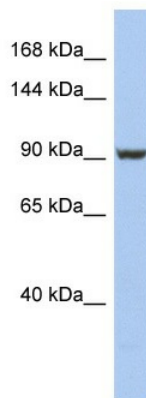
HNPCC4; H_DJ0042M02.9; PMS2CL; PMSL2

Protein Families:

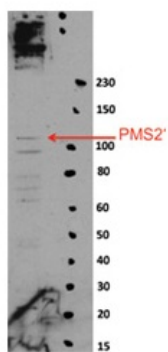
Druggable Genome

Protein Pathways:

Mismatch repair

Product images:

WB Suggested Anti-PMS2 Antibody Titration: 0.2-1 ug/ml
ELISA Titer: 1:312500
Positive Control: HepG2 cell lysate PMS2 is supported by BioGPS gene expression data to be expressed in HepG2



Sample Type: HeLa extract Dilution: 1:1000