

## Product datasheet for **TA357276**

### NDOR1 Rabbit Polyclonal Antibody

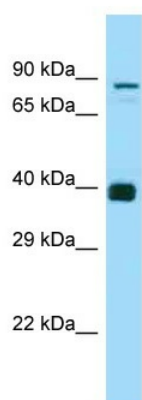
#### Product data:

Product Type:	Primary Antibodies
Applications:	WB
Reactivity:	Human
Host:	Rabbit
Clonality:	Polyclonal
Specificity:	<b>Expected reactivity:</b> Human
Formulation:	Liquid. Purified antibody supplied in 1x PBS buffer with 0.09% (w/v) sodium azide and 2% sucrose.
Concentration:	lot specific
Purification:	Affinity Purified
Conjugation:	Unconjugated
Storage:	For short term use, store at 2-8°C up to 1 week. For long term storage, store at -20°C in small aliquots to prevent freeze-thaw cycles.
Stability:	Shelf life: one year from despatch.
Predicted Protein Size:	42kDa
Gene Name:	NADPH dependent diflavin oxidoreductase 1
Database Link:	<a href="#">XP_001716622</a> <a href="#">Entrez Gene 27158 Human</a> <a href="#">Q9UHB4</a>
Background:	This gene encodes an NADPH-dependent diflavin reductase that contains both flavin mononucleotide (FMN) and flavin adenine dinucleotide (FAD) binding domains. The encoded protein is an enzyme that catalyzes the transfers electrons from NADPH through FAD and FMN cofactors to potential redox partners. Alternative splicing results in multiple transcript variants.
Synonyms:	bA350O14.9; MGC138148; NR1



[View online »](#)

## Product images:



WB Suggested Anti-NDOR1 Antibody  
Titration: 1.0 ug/ml  
Positive Control: ACHN Whole Cell