

Product datasheet for **TA357275**

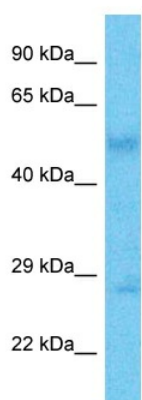
RSPH10B Rabbit Polyclonal Antibody

Product data:

Product Type:	Primary Antibodies
Applications:	WB
Reactivity:	Human
Host:	Rabbit
Clonality:	Polyclonal
Immunogen:	The immunogen is a synthetic peptide directed towards the N-terminal region of Human R10B2
Specificity:	Expected reactivity: Human
Formulation:	Liquid. Purified antibody supplied in 1x PBS buffer with 0.09% (w/v) sodium azide and 2% sucrose.
Concentration:	lot specific
Purification:	Affinity Purified
Conjugation:	Unconjugated
Storage:	For short term use, store at 2-8°C up to 1 week. For long term storage, store at -20°C in small aliquots to prevent freeze-thaw cycles.
Stability:	Shelf life: one year from despatch.
Predicted Protein Size:	30kDa
Gene Name:	radial spoke head 10 homolog B
Database Link:	Entrez Gene 222967 Human B2RC85-2
Synonyms:	MGC50833; OTTHUMP00000201304; OTTHUMP00000201305



[View online »](#)

Product images:


Host: Rabbit
 Target Name: R10B2
 Sample Tissue: Gallbladder Tumor Lysate
 Antibody Dilution: 1.0µg/ml

Host: Rabbit
 Target Name: R10B2
 Sample Type: Gallbladder Tumor lysates
 Antibody Dilution: 1.0ug/ml