

Product datasheet for **TA357273**

FAM190A (CCSER1) Rabbit Polyclonal Antibody

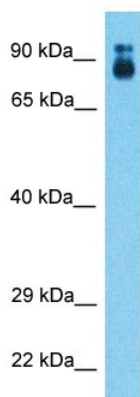
Product data:

Product Type:	Primary Antibodies
Applications:	WB
Reactivity:	Human
Host:	Rabbit
Clonality:	Polyclonal
Immunogen:	The immunogen is a synthetic peptide directed towards the middle region of Human CCSE1
Specificity:	Expected reactivity: Cow, Dog, Guinea Pig, Horse, Human, Mouse, Pig, Rabbit, Rat Homology: Cow: 93%; Dog: 93%; Guinea Pig: 85%; Horse: 93%; Human: 100%; Mouse: 86%; Pig: 93%; Rabbit: 93%; Rat: 86%
Formulation:	Liquid. Purified antibody supplied in 1x PBS buffer with 0.09% (w/v) sodium azide and 2% sucrose.
Concentration:	lot specific
Purification:	Affinity purified
Conjugation:	Unconjugated
Storage:	For short term use, store at 2-8°C up to 1 week. For long term storage, store at -20°C in small aliquots to prevent freeze-thaw cycles.
Stability:	Shelf life: one year from despatch.
Predicted Protein Size:	74kDa
Gene Name:	coiled-coil serine rich protein 1
Database Link:	NP_997374 Entrez Gene 401145 Human Q9C0I3-2
Synonyms:	FAM190A



[View online »](#)

Product images:



Host: Rabbit
Target Name: CCSE1
Sample Tissue: Stomach Tumor Lysate
Antibody Dilution: 1.0µg/ml

Host: Rabbit
Target Name: CCSE1
Sample Type: Stomach Tumor lysates
Antibody Dilution: 1.0ug/ml