

Product datasheet for **TA357271**

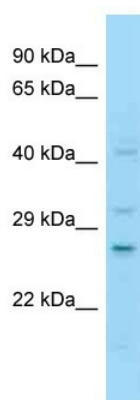
NT2NL (NOTCH2NL) Rabbit Polyclonal Antibody

Product data:

Product Type:	Primary Antibodies
Applications:	WB
Reactivity:	Human
Host:	Rabbit
Clonality:	Polyclonal
Specificity:	Expected reactivity: Human Homology: Human: 100%
Formulation:	Liquid. Purified antibody supplied in 1x PBS buffer with 0.09% (w/v) sodium azide and 2% sucrose. <i>Note that this product is shipped as lyophilized powder to China customers.</i>
Concentration:	lot specific
Purification:	Affinity Purified
Conjugation:	Unconjugated
Storage:	For short term use, store at 2-8°C up to 1 week. For long term storage, store at -20°C in small aliquots to prevent freeze-thaw cycles.
Stability:	Shelf life: one year from despatch.
Predicted Protein Size:	26kDa
Gene Name:	notch 2 N-terminal like
Database Link:	NP_982283 Entrez Gene 388677 Human Q7Z3S9
Synonyms:	N2N



[View online »](#)

Product images:

WB Suggested Anti-NOTCH2NL Antibody
Titration: 1.0 ug/ml
Positive Control: Jurkat Whole Cell
NOTCH2NL is supported by BioGPS gene expression data to be expressed in Jurkat