

Product datasheet for **TA357268**

Simc1 Rabbit Polyclonal Antibody

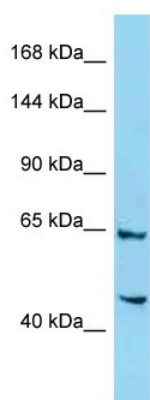
Product data:

Product Type:	Primary Antibodies
Applications:	WB
Reactivity:	Mouse
Host:	Rabbit
Clonality:	Polyclonal
Specificity:	Expected reactivity: Cow, Dog, Horse, Human, Mouse, Pig, Rabbit, Rat Homology: Cow: 85%; Dog: 100%; Horse: 100%; Human: 100%; Mouse: 100%; Pig: 100%; Rabbit: 100%; Rat: 100%
Formulation:	Liquid. Purified antibody supplied in 1x PBS buffer with 0.09% (w/v) sodium azide and 2% sucrose.
Concentration:	lot specific
Purification:	Affinity Purified
Conjugation:	Unconjugated
Storage:	For short term use, store at 2-8°C up to 1 week. For long term storage, store at -20°C in small aliquots to prevent freeze-thaw cycles.
Stability:	Shelf life: one year from despatch.
Predicted Protein Size:	58kDa
Gene Name:	SUMO-interacting motifs containing 1
Database Link:	NP_795961 Entrez Gene 319719 Mouse E9Q8U1
Background:	The function of this protein remains unknown.
Synonyms:	4732471D19Rik



[View online »](#)

Product images:



WB Suggested Anti-4732471D19Rik Antibody
 Titration: 1.0 ug/ml
 Positive Control: Mouse Liver