

Product datasheet for **TA357265**

GNRH2 Rabbit Polyclonal Antibody

Product data:

Product Type:	Primary Antibodies
Applications:	IHC
Reactivity:	Human
Host:	Rabbit
Clonality:	Polyclonal
Immunogen:	The immunogen is a synthetic peptide directed towards the following sequence SDALAPLDDSMPEWGRRTTAQWSLHRKRHLARTLLTAAREPRPAPPSSNKV
Specificity:	Expected reactivity: Human Homology: Human: 100%
Formulation:	Liquid. Purified antibody supplied in 1x PBS buffer with 0.09% (w/v) sodium azide and 2% sucrose.
Concentration:	lot specific
Purification:	Affinity Purified
Conjugation:	Unconjugated
Storage:	For short term use, store at 2-8°C up to 1 week. For long term storage, store at -20°C in small aliquots to prevent freeze-thaw cycles.
Stability:	Shelf life: one year from despatch.
Predicted Protein Size:	13 kDa
Gene Name:	gonadotropin releasing hormone 2
Database Link:	NP_001492 Entrez Gene 2797 Human O43555
Background:	The protein encoded by this gene is a preproprotein that is cleaved to form a secreted 10 aa peptide hormone. The secreted decapeptide regulates reproduction in females by stimulating the secretion of both luteinizing- and follicle-stimulating hormones. Three transcript variants that encode unique proproteins but the same peptide hormone have been found for this gene.
Synonyms:	GnRH-II; LH-RHII; OTTHUMP00000030076; OTTHUMP00000030077

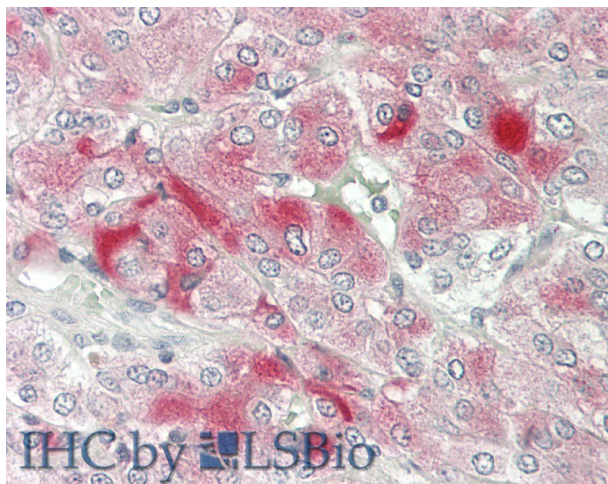


[View online »](#)

Protein Families: Druggable Genome, Secreted Protein

Protein Pathways: GnRH signaling pathway

Product images:



Rabbit Anti-GNRH2 antibody
Catalog Number: ARP55770
Formalin Fixed Paraffin Embedded Tissue:
Human Adrenal
Primary antibody Concentration: 1:100
Secondary Antibody: Donkey anti-Rabbit-Cy3
Secondary Antibody Concentration: 1:200
Magnification: 20x
Exposure Time: 0.5-2.0sec