

Product datasheet for **TA357264**

CYP4X1 Rabbit Polyclonal Antibody

Product data:

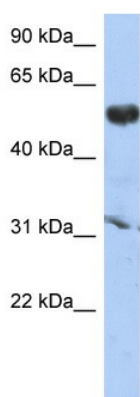
Product Type:	Primary Antibodies
Applications:	WB
Reactivity:	Human
Host:	Rabbit
Clonality:	Polyclonal
Immunogen:	The immunogen is a synthetic peptide directed towards the middle region of human CYP4X1
Specificity:	Expected reactivity: Human Homology: Human: 100%
Formulation:	Liquid. Purified antibody supplied in 1x PBS buffer with 0.09% (w/v) sodium azide and 2% sucrose. <i>Note that this product is shipped as lyophilized powder to China customers.</i>
Concentration:	lot specific
Purification:	Affinity Purified
Conjugation:	Unconjugated
Storage:	For short term use, store at 2-8°C up to 1 week. For long term storage, store at -20°C in small aliquots to prevent freeze-thaw cycles.
Stability:	Shelf life: one year from despatch.
Predicted Protein Size:	59kDa
Gene Name:	cytochrome P450 family 4 subfamily X member 1
Database Link:	NP_828847 Entrez Gene 260293 Human Q8N118
Background:	The specific function of the protein remains unknown. This gene encodes a member of the cytochrome P450 superfamily of enzymes. The cytochrome P450 proteins are monooxygenases which catalyze many reactions involved in drug metabolism and synthesis of cholesterol, steroids and other lipids. The expression pattern of a similar rat protein suggests that this protein may be involved in neurovascular function in the brain.
Synonyms:	CYPIVX1; MGC40051



[View online »](#)

Protein Families: Druggable Genome, P450, Transmembrane

Product images:



WB Suggested Anti-CYP4X1 Antibody Titration:
0.2-1 ug/ml
ELISA Titer: 1:312500
Positive Control: PANC1 cell lysate