

Product datasheet for **TA357263**

Cyp4x1 Rabbit Polyclonal Antibody

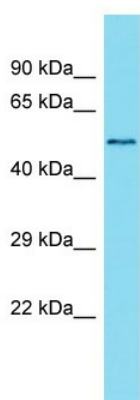
Product data:

| | |
|-------------------------|---|
| Product Type: | Primary Antibodies |
| Applications: | WB |
| Reactivity: | Mouse |
| Host: | Rabbit |
| Clonality: | Polyclonal |
| Immunogen: | The immunogen is a synthetic peptide directed towards the C-terminal region of Mouse Cyp4x1 |
| Specificity: | Expected reactivity: Dog, Guinea Pig, Horse, Human, Mouse, Rabbit, Rat Homology: Dog: 100%; Guinea Pig: 86%; Horse: 100%; Human: 100%; Mouse: 86%; Rabbit: 79%; Rat: 86% |
| Formulation: | Liquid. Purified antibody supplied in 1x PBS buffer with 0.09% (w/v) sodium azide and 2% sucrose. <i>Note that this product is shipped as lyophilized powder to China customers.</i> |
| Concentration: | lot specific |
| Purification: | Affinity Purified |
| Conjugation: | Unconjugated |
| Storage: | For short term use, store at 2-8°C up to 1 week. For long term storage, store at -20°C in small aliquots to prevent freeze-thaw cycles. |
| Stability: | Shelf life: one year from despatch. |
| Predicted Protein Size: | 58kDa |
| Gene Name: | cytochrome P450, family 4, subfamily x, polypeptide 1 |
| Database Link: | NP_001003947 Entrez Gene 81906 Mouse Q6A152 |
| Background: | The function of this protein remains unknown. |
| Synonyms: | CYPIVX1; MGC40051 |



[View online »](#)

Product images:



Host: Rabbit
Target Name: Cyp4x1
Sample Type: Mouse Thymus lysates
Antibody Dilution: 1.0ug/ml