

Product datasheet for **TA357258**

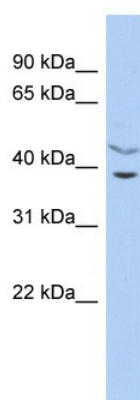
C11ORF77 (HARBI1) Rabbit Polyclonal Antibody

Product data:

Product Type:	Primary Antibodies
Applications:	WB
Reactivity:	Human
Host:	Rabbit
Clonality:	Polyclonal
Immunogen:	The immunogen is a synthetic peptide directed towards the middle region of human C11orf77
Specificity:	Expected reactivity: Cow, Dog, Guinea Pig, Horse, Human, Mouse, Rabbit, Rat, Zebrafish Homology: Cow: 100%; Dog: 100%; Guinea Pig: 100%; Horse: 100%; Human: 100%; Mouse: 100%; Rabbit: 100%; Rat: 100%; Zebrafish: 79%
Formulation:	Liquid. Purified antibody supplied in 1x PBS buffer with 0.09% (w/v) sodium azide and 2% sucrose.
Concentration:	lot specific
Purification:	Affinity Purified
Conjugation:	Unconjugated
Storage:	For short term use, store at 2-8°C up to 1 week. For long term storage, store at -20°C in small aliquots to prevent freeze-thaw cycles.
Stability:	Shelf life: one year from despatch.
Predicted Protein Size:	39kDa
Gene Name:	harbinger transposase derived 1
Database Link:	NP_776172 Entrez Gene 283254 Human Q96MB7
Background:	The specific function of the protein remains unknown.
Synonyms:	C11orf77; FLJ32675



[View online »](#)

Product images:

WB Suggested Anti-C11orf77 Antibody Titration:
0.2-1 ug/ml
ELISA Titer: 1:1562500
Positive Control: THP-1 cell lysate