

Product datasheet for **TA357256**

CATSPERE Rabbit Polyclonal Antibody

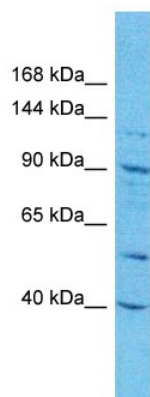
Product data:

Product Type:	Primary Antibodies
Applications:	WB
Reactivity:	Human
Host:	Rabbit
Clonality:	Polyclonal
Immunogen:	The immunogen is a synthetic peptide directed towards the N-terminal region of Human CA101
Specificity:	Expected reactivity: Human Homology: Human: 100%
Formulation:	Liquid. Purified antibody supplied in 1x PBS buffer with 0.09% (w/v) sodium azide and 2% sucrose.
Concentration:	lot specific
Purification:	Affinity purified
Conjugation:	Unconjugated
Storage:	For short term use, store at 2-8°C up to 1 week. For long term storage, store at -20°C in small aliquots to prevent freeze-thaw cycles.
Stability:	Shelf life: one year from despatch.
Predicted Protein Size:	91kDa
Gene Name:	chromosome 1 open reading frame 101
Database Link:	NP_776168 Entrez Gene 257044 Human Q5SY80-2
Synonyms:	MGC33370; RP11-523K4.1



[View online »](#)

Product images:



Host: Rabbit
Target Name: CA101
Sample Tissue: A549 Cell Lysate
Antibody Dilution: 1.0 μ g/ml

Host: Rabbit
Target Name: CA101
Sample Type: A549 Whole Cell lysates
Antibody Dilution: 1.0 μ g/ml