

## Product datasheet for **TA357255**

### Rimklb Rabbit Polyclonal Antibody

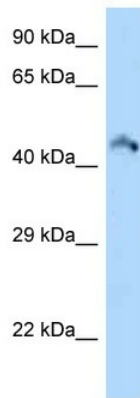
#### Product data:

Product Type:	Primary Antibodies
Applications:	WB
Reactivity:	Mouse
Host:	Rabbit
Clonality:	Polyclonal
Specificity:	<b>Expected reactivity:</b> Cow, Dog, Guinea Pig, Horse, Human, Mouse, Rabbit, Rat, Zebrafish <b>Homology:</b> Cow: 100%; Dog: 100%; Guinea Pig: 100%; Horse: 100%; Human: 100%; Mouse: 100%; Rabbit: 100%; Rat: 100%; Zebrafish: 77%
Formulation:	Liquid. Purified antibody supplied in 1x PBS buffer with 0.09% (w/v) sodium azide and 2% sucrose. <i>Note that this product is shipped as lyophilized powder to China customers.</i>
Concentration:	lot specific
Purification:	Affinity Purified
Conjugation:	Unconjugated
Storage:	For short term use, store at 2-8°C up to 1 week. For long term storage, store at -20°C in small aliquots to prevent freeze-thaw cycles.
Stability:	Shelf life: one year from despatch.
Predicted Protein Size:	42kDa
Gene Name:	ribosomal modification protein rimK-like family member B
Database Link:	<a href="#">NP_081940</a> <a href="#">Entrez Gene 108653 Mouse</a> <a href="#">Q80WS1</a>
Background:	Rimklb catalyzes the synthesis of beta-citryl-glutamate and N-acetyl-aspartyl-glutamate. Beta-citryl-glutamate is synthesized more efficiently than N-acetyl-aspartyl-glutamate.
Synonyms:	FAM80B; KIAA1238

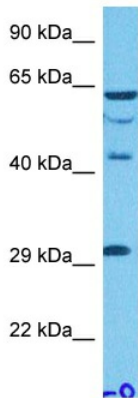


[View online »](#)

Product images:



WB Suggested Anti-Rimklb Antibody  
Titration: 1.0 ug/ml  
Positive Control: Mouse Kidney



Host: Rabbit  
Target Name: RIMKLA  
Sample Type: Mouse Brain Lysate  
Antibody Dilution: 1.0ug/ml

Host: Rabbit  
Target Name: RIMKLA  
Sample Tissue: Mouse Mouse Brain  
Antibody Dilution: 1ug/ml