

## Product datasheet for **TA357254**

### **DNAH6 Rabbit Polyclonal Antibody**

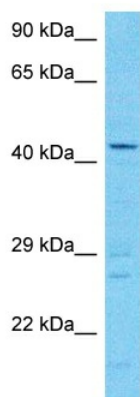
#### **Product data:**

Product Type:	Primary Antibodies
Applications:	WB
Reactivity:	Human
Host:	Rabbit
Clonality:	Polyclonal
Immunogen:	The immunogen is a synthetic peptide directed towards the middle region of Human DYH6
Specificity:	<b>Expected reactivity:</b> Human
Formulation:	Liquid. Purified antibody supplied in 1x PBS buffer with 0.09% (w/v) sodium azide and 2% sucrose.
Concentration:	lot specific
Purification:	Affinity purified
Conjugation:	Unconjugated
Storage:	For short term use, store at 2-8°C up to 1 week. For long term storage, store at -20°C in small aliquots to prevent freeze-thaw cycles.
Stability:	Shelf life: one year from despatch.
Predicted Protein Size:	44kDa
Gene Name:	dynein axonemal heavy chain 6
Database Link:	<a href="#">Entrez Gene 1768 Human Q9C0G6-3</a>
Background:	This gene belongs to the dynein family, whose members encode large proteins that are constituents of the microtubule-associated motor protein complex. This complex is composed of dynein heavy, intermediate and light chains, which can be axonemal or cytoplasmic. This protein is an axonemal dynein heavy chain. It is involved in producing force for ciliary beating by using energy from ATP hydrolysis. Mutations in this gene may cause primary ciliary dyskinesia (PCD) as well as heterotaxy.
Synonyms:	DKFZp667K087; DNAHC6; DNHL1; FLJ23529; FLJ37357; HL-2; HL2; KIAA1697; MGC132544; MGC141984; MGC177197



[View online »](#)

Product images:



Host: Rabbit  
Target Name: DYH6  
Sample Tissue: HCT15 Cell Lysate  
Antibody Dilution: 1.0µg/ml

Host: Rabbit  
Target Name: DYH6  
Sample Type: HCT15 Whole Cell lysates  
Antibody Dilution: 1.0ug/ml