

Product datasheet for **TA357253**

Endov Rabbit Polyclonal Antibody

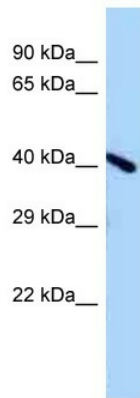
Product data:

Product Type:	Primary Antibodies
Applications:	WB
Reactivity:	Mouse
Host:	Rabbit
Clonality:	Polyclonal
Specificity:	Expected reactivity: Cow, Dog, Guinea Pig, Horse, Human, Mouse, Rabbit Homology: Cow: 100%; Dog: 93%; Guinea Pig: 79%; Horse: 93%; Human: 100%; Mouse: 100%; Rabbit: 77%
Formulation:	Liquid. Purified antibody supplied in 1x PBS buffer with 0.09% (w/v) sodium azide and 2% sucrose. <i>Note that this product is shipped as lyophilized powder to China customers.</i>
Concentration:	lot specific
Purification:	Affinity Purified
Conjugation:	Unconjugated
Storage:	For short term use, store at 2-8°C up to 1 week. For long term storage, store at -20°C in small aliquots to prevent freeze-thaw cycles.
Stability:	Shelf life: one year from despatch.
Predicted Protein Size:	37kDa
Gene Name:	endonuclease V
Database Link:	NP_001158108 Entrez Gene 338371 Mouse Q8C9A2
Background:	Endov selectively cleaves DNA at the second phosphodiester bond 3' to hypoxanthine- and uracil-containing nucleotides. It shows higher activity towards single-stranded than double-stranded DNA and towards hypoxanthine than uracil..
Synonyms:	FLJ35220; MGC74455

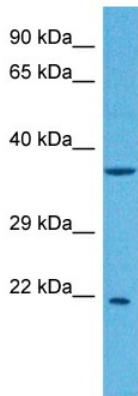


[View online »](#)

Product images:



WB Suggested Anti-A730011L01Rik Antibody
 Titration: 1.0 ug/ml
 Positive Control: Mouse Brain



Host: Rabbit
 Target Name: ENDOV
 Sample Type: Mouse Kidney Lysate
 Antibody Dilution: 1.0µg/ml

Host: Rabbit
 Target Name: ENDOV
 Sample Tissue: Mouse Mouse Kidney
 Antibody Dilution: 1 ug/ml