

## Product datasheet for **TA357234**

### Ldlrap1 Rabbit Polyclonal Antibody

#### Product data:

Product Type:	Primary Antibodies
Applications:	WB
Reactivity:	Mouse
Host:	Rabbit
Clonality:	Polyclonal
Immunogen:	The immunogen is a synthetic peptide directed towards the C-terminal region of Mouse Ldlrap1
Specificity:	<b>Expected reactivity:</b> Cow, Dog, Guinea Pig, Horse, Human, Mouse, Rabbit, Rat, Zebrafish <b>Homology:</b> Cow: 100%; Dog: 100%; Guinea Pig: 100%; Horse: 100%; Human: 100%; Mouse: 100%; Rabbit: 100%; Rat: 100%; Zebrafish: 93%
Formulation:	Liquid. Purified antibody supplied in 1x PBS buffer with 0.09% (w/v) sodium azide and 2% sucrose. <i>Note that this product is shipped as lyophilized powder to China customers.</i>
Concentration:	lot specific
Purification:	Affinity Purified
Conjugation:	Unconjugated
Storage:	For short term use, store at 2-8°C up to 1 week. For long term storage, store at -20°C in small aliquots to prevent freeze-thaw cycles.
Stability:	Shelf life: one year from despatch.
Predicted Protein Size:	29kDa
Gene Name:	low density lipoprotein receptor adaptor protein 1
Database Link:	<a href="#">NP_663529</a> <a href="#">Entrez Gene 100017 Mouse</a> <a href="#">Q8C142</a>



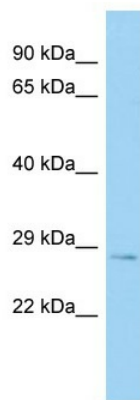
[View online »](#)

**Background:**

Ldlrap1 is an adapter protein (clathrin-associated sorting protein (CLASP)) required for efficient endocytosis of the LDL receptor (LDLR) in polarized cells such as hepatocytes and lymphocytes, but not in non-polarized cells (fibroblasts). It may be required for LDL binding and internalization but not for receptor clustering in coated pits. It may facilitate the endocytosis of LDLR and LDLR-LDL complexes from coated pits by stabilizing the interaction between the receptor and the structural components of the pits. Ldlrap1 may also be involved in the internalization of other LDLR family members. Ldlrap1 binds to phosphoinositides, which regulate clathrin bud assembly at the cell surface.

**Synonyms:**

ARH; ARH1; ARH2; DKFZp586D0624; FHCB1; FHCB2; MGC34705

**Product images:**

Host: Rabbit  
Target Name: Ldlrap1  
Sample Type: Mouse Testis lysates  
Antibody Dilution: 1.0ug/ml