

Product datasheet for **TA357228**

MSL1v1 (KANSL1) Rabbit Polyclonal Antibody

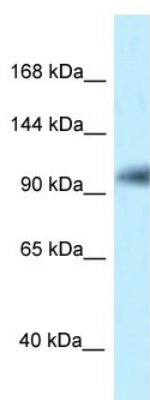
Product data:

Product Type:	Primary Antibodies
Applications:	WB
Reactivity:	Human
Host:	Rabbit
Clonality:	Polyclonal
Specificity:	Expected reactivity: Cow, Dog, Guinea Pig, Horse, Human, Mouse, Rabbit, Rat Homology: Cow: 100%; Dog: 100%; Guinea Pig: 100%; Horse: 100%; Human: 100%; Mouse: 93%; Rabbit: 93%; Rat: 93%
Formulation:	Liquid. Purified antibody supplied in 1x PBS buffer with 0.09% (w/v) sodium azide and 2% sucrose.
Concentration:	lot specific
Purification:	Affinity Purified
Conjugation:	Unconjugated
Storage:	For short term use, store at 2-8°C up to 1 week. For long term storage, store at -20°C in small aliquots to prevent freeze-thaw cycles.
Stability:	Shelf life: one year from despatch.
Predicted Protein Size:	121kDa
Gene Name:	KAT8 regulatory NSL complex subunit 1
Database Link:	NP_056258 Entrez Gene 284058 Human Q7Z3B3
Background:	The function of this protein remains unknown.
Synonyms:	1700081L11Rik; 9430041J06Rik; mKIAA1267



[View online »](#)

Product images:



WB Suggested Anti-KIAA1267 Antibody
Titration: 1.0 ug/ml
Positive Control: ACHN Whole Cell