

Product datasheet for **TA357224**

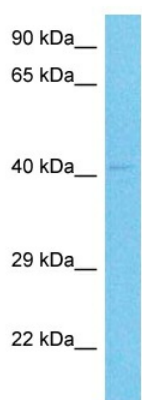
C22orf9 (KIAA0930) Rabbit Polyclonal Antibody

Product data:

Product Type:	Primary Antibodies
Applications:	WB
Reactivity:	Human
Host:	Rabbit
Clonality:	Polyclonal
Immunogen:	The immunogen for Anti-KIAA0930 antibody is: synthetic peptide directed towards the C-terminal region of Human K0930
Specificity:	Expected reactivity: Cow, Dog, Guinea Pig, Horse, Human, Mouse, Rabbit, Rat Homology: Cow: 100%; Dog: 93%; Guinea Pig: 79%; Horse: 100%; Human: 100%; Mouse: 93%; Rabbit: 86%; Rat: 100%
Formulation:	Liquid. Purified antibody supplied in 1x PBS buffer with 0.09% (w/v) sodium azide and 2% sucrose. <i>Note that this product is shipped as lyophilized powder to China customers.</i>
Concentration:	lot specific
Purification:	Affinity purified
Conjugation:	Unconjugated
Storage:	For short term use, store at 2-8°C up to 1 week. For long term storage, store at -20°C in small aliquots to prevent freeze-thaw cycles.
Stability:	Shelf life: one year from despatch.
Predicted Protein Size:	40 kDa
Gene Name:	KIAA0930
Database Link:	Entrez Gene 23313 Human Q6ICG6-3
Synonyms:	C22orf9



[View online »](#)

Product images:

Host: Rabbit
Target Name: K0930
Sample Tissue: Large intestine Tumor Lysate
Antibody Dilution: 1.0 μ g/ml

WB Suggested Anti-K0930 antibody Titration: 1
ug/mL
Sample Type: Human Large intestine Tumor