

Product datasheet for TA357223

KLHDC10 Rabbit Polyclonal Antibody

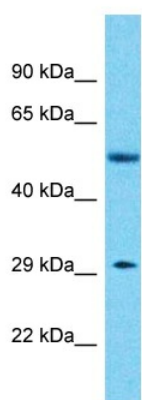
Product data:

Product Type:	Primary Antibodies
Applications:	WB
Reactivity:	Human
Host:	Rabbit
Clonality:	Polyclonal
Immunogen:	The immunogen is a synthetic peptide directed towards the C-terminal region of Human KLHDC10
Specificity:	Expected reactivity: Cow, Dog, Guinea Pig, Horse, Human, Mouse, Rabbit, Rat, Zebrafish Homology: Cow: 100%; Dog: 100%; Guinea Pig: 100%; Horse: 100%; Human: 100%; Mouse: 100%; Rabbit: 100%; Rat: 100%; Zebrafish: 100%
Formulation:	Liquid. Purified antibody supplied in 1x PBS buffer with 0.09% (w/v) sodium azide and 2% sucrose.
Concentration:	lot specific
Purification:	Affinity Purified
Conjugation:	Unconjugated
Storage:	For short term use, store at 2-8°C up to 1 week. For long term storage, store at -20°C in small aliquots to prevent freeze-thaw cycles.
Stability:	Shelf life: one year from despatch.
Predicted Protein Size:	32kDa
Gene Name:	kelch domain containing 10
Database Link:	Entrez Gene 23008 Human Q6PID8-2
Background:	KLHDC10 participates in the oxidative stress-induced cell death through MAP3K5 activation. It inhibits PPP5C phosphatase activity on MAP3K5.
Synonyms:	KIAA0265; slim



[View online »](#)

Product images:



Host: Rabbit
Target Name: KLHDC10
Sample Tissue: Breast Tumor Lysate
Antibody Dilution: 1.0 μ g/ml

Host: Rabbit
Target Name: KLHDC10
Sample Type: Breast Tumor lysates
Antibody Dilution: 1.0ug/ml