

## Product datasheet for **TA357222**

### Arsg Rabbit Polyclonal Antibody

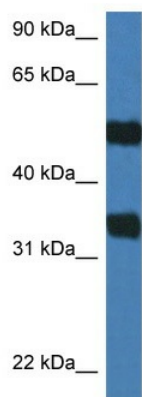
#### Product data:

Product Type:	Primary Antibodies
Applications:	WB
Reactivity:	Mouse
Host:	Rabbit
Clonality:	Polyclonal
Specificity:	<b>Expected reactivity:</b> Cow, Dog, Guinea Pig, Horse, Human, Mouse, Rabbit, Rat <b>Homology:</b> Cow: 100%; Dog: 100%; Guinea Pig: 100%; Horse: 100%; Human: 100%; Mouse: 100%; Rabbit: 93%; Rat: 100%
Formulation:	Liquid. Purified antibody supplied in 1x PBS buffer with 0.09% (w/v) sodium azide and 2% sucrose.
Concentration:	lot specific
Purification:	Affinity Purified
Conjugation:	Unconjugated
Storage:	For short term use, store at 2-8°C up to 1 week. For long term storage, store at -20°C in small aliquots to prevent freeze-thaw cycles.
Stability:	Shelf life: one year from despatch.
Predicted Protein Size:	58kDa
Gene Name:	arylsulfatase G
Database Link:	<a href="#">NP_082986</a> <a href="#">Entrez Gene 74008 Mouse</a> <a href="#">Q3TYD4</a>
Background:	Arsg displays arylsulfatase activity with pseudosubstrates at acidic pH, such as p-nitrocatechol sulfate.
Synonyms:	ASG; KIAA1001



[View online »](#)

## Product images:



WB Suggested Anti-Arsg Antibody  
Titration: 1.0 ug/ml  
Positive Control: Mouse Spleen