

Product datasheet for **TA357221**

Sec31a Rabbit Polyclonal Antibody

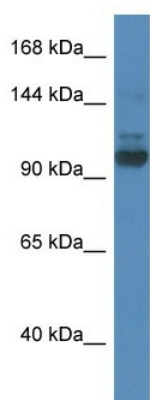
Product data:

Product Type:	Primary Antibodies
Applications:	WB
Reactivity:	Rat
Host:	Rabbit
Clonality:	Polyclonal
Immunogen:	The immunogen is a synthetic peptide corresponding to a region of Rat
Specificity:	Expected reactivity: Cow, Dog, Guinea Pig, Horse, Human, Mouse, Rabbit, Rat, Zebrafish Homology: Cow: 100%; Dog: 100%; Guinea Pig: 100%; Horse: 100%; Human: 100%; Mouse: 100%; Rabbit: 100%; Rat: 100%; Zebrafish: 91%
Formulation:	Liquid. Purified antibody supplied in 1x PBS buffer with 0.09% (w/v) sodium azide and 2% sucrose.
Concentration:	lot specific
Purification:	Affinity Purified
Conjugation:	Unconjugated
Storage:	For short term use, store at 2-8°C up to 1 week. For long term storage, store at -20°C in small aliquots to prevent freeze-thaw cycles.
Stability:	Shelf life: one year from despatch.
Predicted Protein Size:	136kDa
Gene Name:	SEC31 homolog A, COPII coat complex component
Database Link:	NP_148981 Entrez Gene 93646 Rat Q9Z2Q1
Background:	Sec31a is a putative membrane-associated endosomal phosphoprotein.
Synonyms:	ABP125; ABP130; DKFZp686N07171; HSPC275; HSPC334; KIAA0905; MGC90305; OTTHUMP00000160810; SEC31L1



[View online »](#)

Product images:



WB Suggested Anti-Sec31a Antibody
Titration: 1.0 ug/ml
Positive Control: Rat Brain