

Product datasheet for **TA357210**

ITGB3BP Rabbit Polyclonal Antibody

Product data:

Product Type:	Primary Antibodies
Applications:	WB
Reactivity:	Human
Host:	Rabbit
Clonality:	Polyclonal
Immunogen:	The immunogen is a synthetic peptide directed towards the N-terminal region of Human ITGB3BP
Specificity:	Expected reactivity: Dog, Human Homology: Dog: 91%; Human: 100%
Formulation:	Liquid. Purified antibody supplied in 1x PBS buffer with 0.09% (w/v) sodium azide and 2% sucrose. <i>Note that this product is shipped as lyophilized powder to China customers.</i>
Concentration:	lot specific
Purification:	Affinity Purified
Conjugation:	Unconjugated
Storage:	For short term use, store at 2-8°C up to 1 week. For long term storage, store at -20°C in small aliquots to prevent freeze-thaw cycles.
Stability:	Shelf life: one year from despatch.
Predicted Protein Size:	23kDa
Gene Name:	integrin subunit beta 3 binding protein
Database Link:	NP_055103 Entrez Gene 23421 Human Q13352-5



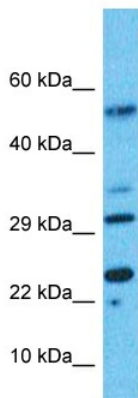
[View online »](#)

Background:

This gene encodes a transcriptional coregulator that binds to and enhances the activity of members of the nuclear receptor families, thyroid hormone receptors and retinoid X receptors. This protein also acts as a corepressor of NF-kappaB-dependent signaling. This protein induces apoptosis in breast cancer cells through a caspase 2-mediated signaling pathway. This protein is also a component of the centromere-specific histone H3 variant nucleosome associated complex (CENP-NAC) and may be involved in mitotic progression by recruiting the histone H3 variant CENP-A to the centromere. Alternate splicing results in multiple transcript variants.

Synonyms:

Beta3-endonexin; CENP-R; CENPR; HSU37139; NRIF3; TAP20

Product images:


Host: Rabbit
 Target Name: ITGB3BP
 Sample Tissue: Gallbladder Tumor Lysate
 Antibody Dilution: 1.0µg/ml

Host: Rabbit
 Target Name: ITGB3BP
 Sample Type: Gallbladder Tumor lysates
 Antibody Dilution: 1.0ug/ml