

Product datasheet for **TA357194**

ANGPTL2 Rabbit Polyclonal Antibody

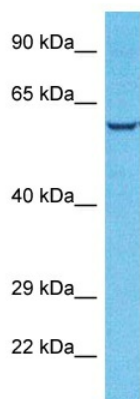
Product data:

Product Type:	Primary Antibodies
Applications:	WB
Reactivity:	Human
Host:	Rabbit
Clonality:	Polyclonal
Immunogen:	The immunogen is a synthetic peptide directed towards the middle region of Human ANGL2
Specificity:	Expected reactivity: Cow, Dog, Guinea Pig, Horse, Human, Mouse, Rabbit, Rat, Zebrafish Homology: Cow: 100%; Dog: 100%; Guinea Pig: 100%; Horse: 100%; Human: 100%; Mouse: 100%; Rabbit: 100%; Rat: 100%; Zebrafish: 100%
Formulation:	Liquid. Purified antibody supplied in 1x PBS buffer with 0.09% (w/v) sodium azide and 2% sucrose. <i>Note that this product is shipped as lyophilized powder to China customers.</i>
Concentration:	lot specific
Purification:	Affinity purified
Conjugation:	Unconjugated
Storage:	For short term use, store at 2-8°C up to 1 week. For long term storage, store at -20°C in small aliquots to prevent freeze-thaw cycles.
Stability:	Shelf life: one year from despatch.
Predicted Protein Size:	54kDa
Gene Name:	angiotensinogen like 2
Database Link:	NP_036230 Entrez Gene 23452 Human Q9UKU9
Background:	Angiotensinogenins are members of the vascular endothelial growth factor family and the only known growth factors largely specific for vascular endothelium. Angiotensinogen-1, angiotensinogen-2, and angiotensinogen-4 participate in the formation of blood vessels. ANGPTL2 protein is a secreted glycoprotein with homology to the angiotensinogenins and may exert a function on endothelial cells through autocrine or paracrine action.



[View online »](#)

Synonyms: ARP2; HARP; MGC8889

Product images:

Host: Rabbit
Target Name: ANGL2
Sample Tissue: Hela Cell Lysate
Antibody Dilution: 1.0µg/ml

Host: Rabbit
Target Name: ANGL2
Sample Type: Hela Whole Cell lysates
Antibody Dilution: 1.0ug/ml