

## Product datasheet for **TA357190**

### Histone H1.3 (HIST1H1D) Rabbit Polyclonal Antibody

#### Product data:

|                         |   |
|-------------------------|---|
| Product Type:           | Primary Antibodies  |
| Applications:           | WB  |
| Reactivity:             | Human   |
| Host:                   | Rabbit  |
| Clonality:              | Polyclonal  |
| Immunogen:              | The immunogen is a synthetic peptide directed towards the N-terminal region of Human HIST1H1D   |
| Specificity:            | <b>Expected reactivity:</b> Cow, Dog, Guinea Pig, Human, Mouse, Rabbit, Rat<br><b>Homology:</b> Cow: 79%; Dog: 79%; Guinea Pig: 79%; Human: 100%; Mouse: 79%; Rabbit: 79%; Rat: 79% |
| Formulation:            | Liquid. Purified antibody supplied in 1x PBS buffer with 0.09% (w/v) sodium azide and 2% sucrose.   |
| Concentration:          | lot specific  |
| Purification:           | Affinity Purified   |
| Conjugation:            | Unconjugated  |
| Storage:                | For short term use, store at 2-8°C up to 1 week. For long term storage, store at -20°C in small aliquots to prevent freeze-thaw cycles.   |
| Stability:              | Shelf life: one year from despatch.   |
| Predicted Protein Size: | 24kDa   |
| Gene Name:              | histone cluster 1, H1d  |
| Database Link:          | <a href="#">NP_005311</a><br><a href="#">Entrez Gene 3007 Human</a><br><a href="#">P16402</a>   |



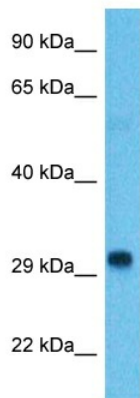
[View online »](#)

**Background:**

Histones are basic nuclear proteins responsible for nucleosome structure of the chromosomal fiber in eukaryotes. Two molecules of each of the four core histones (H2A, H2B, H3, and H4) form an octamer, around which approximately 146 bp of DNA is wrapped in repeating units, called nucleosomes. The linker histone, H1, interacts with linker DNA between nucleosomes and functions in the compaction of chromatin into higher order structures. This gene is intronless and encodes a member of the histone H1 family. Transcripts from this gene lack polyA tails but instead contain a palindromic termination element. This gene is found in the large histone gene cluster on chromosome 6.

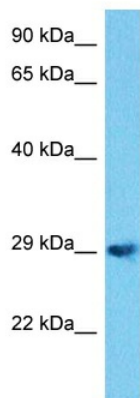
**Synonyms:**

H1.3; H1F3; MGC138176

**Product images:**


Host: Rabbit  
 Target Name: HIST1H1D  
 Sample Tissue: Liver Tumor Lysate  
 Antibody Dilution: 1.0µg/ml

Host: Rabbit  
 Target Name: HIST1H1D  
 Sample Type: Liver Tumor lysates  
 Antibody Dilution: 1.0ug/ml



Host: Rabbit  
 Target Name: HIST1H1D  
 Sample Type: Stomach Tumor Lysate  
 Antibody Dilution: 1.0µg/ml

Host: Rabbit  
 Target Name: HIST1H1D  
 Sample Tissue: Human Stomach Tumor  
 Antibody Dilution: 1ug/ml