

## Product datasheet for **TA357183**

### Lum Rabbit Polyclonal Antibody

#### Product data:

Product Type:	Primary Antibodies
Applications:	IHC, WB
Reactivity:	Human, Mouse
Host:	Rabbit
Clonality:	Polyclonal
Specificity:	<b>Expected reactivity:</b> Cow, Dog, Guinea Pig, Horse, Human, Mouse, Rabbit, Rat <b>Homology:</b> Cow: 93%; Dog: 100%; Guinea Pig: 100%; Horse: 100%; Human: 100%; Mouse: 100%; Rabbit: 93%; Rat: 100%
Formulation:	Liquid. Purified antibody supplied in 1x PBS buffer with 0.09% (w/v) sodium azide and 2% sucrose. <i>Note that this product is shipped as lyophilized powder to China customers.</i>
Concentration:	lot specific
Purification:	Affinity Purified
Conjugation:	Unconjugated
Storage:	For short term use, store at 2-8°C up to 1 week. For long term storage, store at -20°C in small aliquots to prevent freeze-thaw cycles.
Stability:	Shelf life: one year from despatch.
Predicted Protein Size:	37kDa
Gene Name:	lumican
Database Link:	<a href="#">NP_032550</a> <a href="#">Entrez Gene 4060 Human</a> <a href="#">Entrez Gene 17022 Mouse</a> <a href="#">P51885</a>
Background:	The function of this protein remains unknown.
Synonyms:	LDC; lumican; SLRR2D



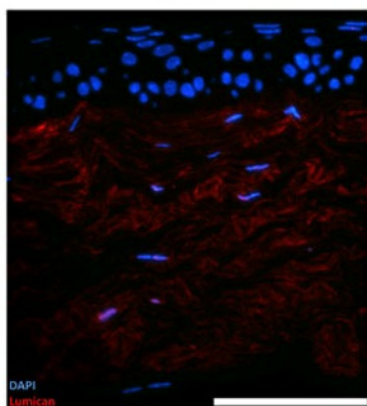
[View online »](#)

## Product images:



Lum antibody - N-terminal region (TA357183) validated by WB using Mouse Heart lysate at 1ug/ml.

## Lum



**Sample Type:** mouse cornea (cystinosin Ko)

**Blue:** DAPI

**Red:** Lum

**Primary Dilution:** 1:250

**Image Submitted By:** Geraint Parfitt

Gavin Herbert Eye Institute See Customer Feedback tab for detailed information.