

## Product datasheet for TA357182

### INPP1 Rabbit Polyclonal Antibody

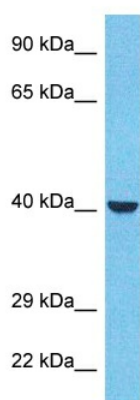
#### Product data:

Product Type:	Primary Antibodies
Applications:	WB
Reactivity:	Human
Host:	Rabbit
Clonality:	Polyclonal
Immunogen:	The immunogen is a synthetic peptide directed towards the N-terminal region of Human INPP
Specificity:	<b>Expected reactivity:</b> Cow, Dog, Guinea Pig, Horse, Human, Mouse, Rabbit, Rat <b>Homology:</b> Cow: 86%; Dog: 93%; Guinea Pig: 92%; Horse: 86%; Human: 100%; Mouse: 100%; Rabbit: 100%; Rat: 86%
Formulation:	Liquid. Purified antibody supplied in 1x PBS buffer with 0.09% (w/v) sodium azide and 2% sucrose. <i>Note that this product is shipped as lyophilized powder to China customers.</i>
Concentration:	lot specific
Purification:	Affinity Purified
Conjugation:	Unconjugated
Storage:	For short term use, store at 2-8°C up to 1 week. For long term storage, store at -20°C in small aliquots to prevent freeze-thaw cycles.
Stability:	Shelf life: one year from despatch.
Predicted Protein Size:	43kDa
Gene Name:	inositol polyphosphate-1-phosphatase
Database Link:	<a href="#">XP_006712561</a> <a href="#">Entrez Gene 3628 Human</a> <a href="#">P49441</a>
Background:	This gene encodes the enzyme inositol polyphosphate-1-phosphatase, one of the enzymes involved in phosphatidylinositol signaling pathways. This enzyme removes the phosphate group at position 1 of the inositol ring from the polyphosphates inositol 1,4-bisphosphate and inositol 1,3,4-trisphosphate.
Synonyms:	IPP; IPPase; MGC110984



[View online »](#)

## Product images:



Host: Rabbit  
Target Name: INPP  
Sample Tissue: MCF7 Cell Lysate  
Antibody Dilution: 1.0 $\mu$ g/ml

Host: Rabbit  
Target Name: INPP  
Sample Type: MCF7 Whole Cell lysates  
Antibody Dilution: 1.0 $\mu$ g/ml