

## Product datasheet for TA357181

### Interferon alpha 8 (IFNA8) Rabbit Polyclonal Antibody

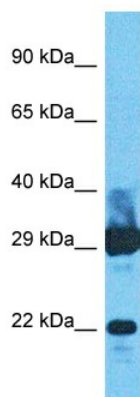
#### Product data:

Product Type:	Primary Antibodies
Applications:	WB
Reactivity:	Human
Host:	Rabbit
Clonality:	Polyclonal
Immunogen:	The immunogen is a synthetic peptide directed towards the C-terminal region of Human IFNA8
Specificity:	<b>Expected reactivity:</b> Human <b>Homology:</b> Human: 100%
Formulation:	Liquid. Purified antibody supplied in 1x PBS buffer with 0.09% (w/v) sodium azide and 2% sucrose.
Concentration:	lot specific
Purification:	Affinity Purified
Conjugation:	Unconjugated
Storage:	For short term use, store at 2-8°C up to 1 week. For long term storage, store at -20°C in small aliquots to prevent freeze-thaw cycles.
Stability:	Shelf life: one year from despatch.
Predicted Protein Size:	20kDa
Gene Name:	interferon alpha 8
Database Link:	<a href="#">NP_002161</a> <a href="#">Entrez Gene 3445 Human P32881</a>
Background:	IFNA8 is produced by macrophages, IFN-alpha have antiviral activities. It is a interferon which stimulates the production of two enzymes: a protein kinase and an oligoadenylate synthetase.
Synonyms:	IFNA8



[View online »](#)

Product images:



Host: Rabbit  
Target Name: IFNA8  
Sample Tissue: Fetal Liver Lysate  
Antibody Dilution: 1.0 $\mu$ g/ml

Host: Rabbit  
Target Name: IFNA8  
Sample Type: Fetal Liver lysates  
Antibody Dilution: 1.0ug/ml