

Product datasheet for **TA357178**

Gfap Rabbit Polyclonal Antibody

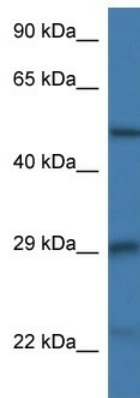
Product data:

Product Type:	Primary Antibodies
Applications:	IHC, WB
Reactivity:	Human, Mouse
Host:	Rabbit
Clonality:	Polyclonal
Immunogen:	The immunogen is a synthetic peptide corresponding to a region of Mouse
Specificity:	Expected reactivity: Cow, Dog, Guinea Pig, Horse, Human, Mouse, Rabbit, Rat, Sheep Homology: Cow: 93%; Dog: 100%; Guinea Pig: 93%; Horse: 93%; Human: 100%; Mouse: 100%; Rabbit: 100%; Rat: 100%; Sheep: 93%
Formulation:	Liquid. Purified antibody supplied in 1x PBS buffer with 0.09% (w/v) sodium azide and 2% sucrose. <i>Note that this product is shipped as lyophilized powder to China customers.</i>
Concentration:	lot specific
Purification:	Affinity Purified
Conjugation:	Unconjugated
Storage:	For short term use, store at 2-8°C up to 1 week. For long term storage, store at -20°C in small aliquots to prevent freeze-thaw cycles.
Stability:	Shelf life: one year from despatch.
Predicted Protein Size:	46kDa
Gene Name:	glial fibrillary acidic protein
Database Link:	NP_034407 Entrez Gene 2670 Human Entrez Gene 14580 Mouse P03995
Background:	GFAP, a class-III intermediate filament, is a cell-specific marker that, during the development of the central nervous system, distinguishes astrocytes from other glial cells.
Synonyms:	FLJ45472



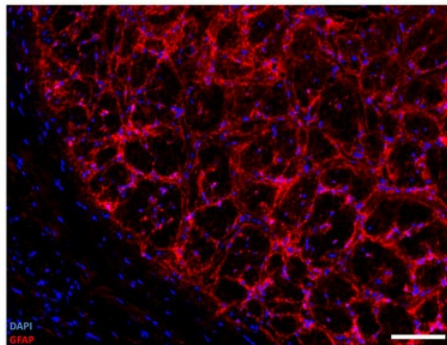
[View online »](#)

Product images:



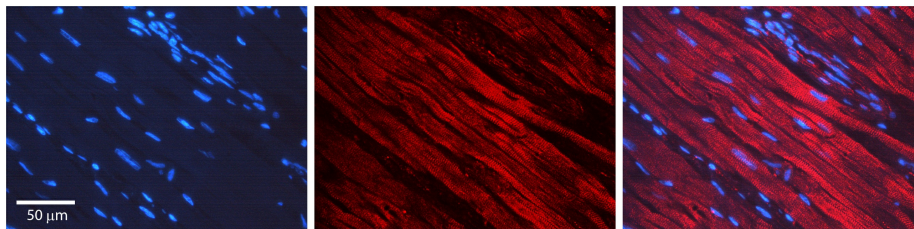
Gfap antibody - N-terminal region (TA357178) validated by WB using Mouse Thymus at 1ug/ml.

Gfap



See Immunohistochemistry 1 Data for more information.

Sample Type: human optic nerve head (frozen)
Blue: DAPI
Red: Gfap
Primary Dilution: 1:250
Image Submitted By: Geraint Parfitt
 Gavin Herbert Eye Institute See Customer Feedback tab for detailed information.



Rabbit Anti-GFAP Antibody
 Catalog Number: TA357178
 Formalin Fixed Paraffin Embedded Tissue:
 Human Heart Muscle Tissue
 Observed Staining: Cytoplasm
 Primary Antibody Concentration: 1:600
 Other Working Concentrations: N/A
 Secondary Antibody: Donkey anti-Rabbit-Cy3
 Secondary Antibody Concentration: 1:200
 Magnification: 20X
 Exposure Time: 0.5-2.0 sec