

## Product datasheet for **TA357168**

### **SUNC1 (SUN3) Rabbit Polyclonal Antibody**

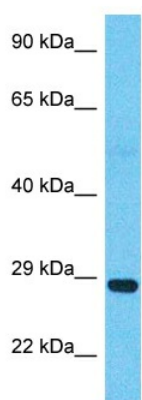
#### **Product data:**

Product Type:	Primary Antibodies
Applications:	WB
Reactivity:	Human
Host:	Rabbit
Clonality:	Polyclonal
Immunogen:	The immunogen is a synthetic peptide directed towards the C-terminal region of Human SUN3
Specificity:	<b>Expected reactivity:</b> Cow, Dog, Guinea Pig, Horse, Human, Mouse, Pig, Rabbit, Rat, Zebrafish <b>Homology:</b> Cow: 100%; Dog: 100%; Guinea Pig: 90%; Horse: 100%; Human: 100%; Mouse: 90%; Pig: 100%; Rabbit: 85%; Rat: 90%; Zebrafish: 90%
Formulation:	Liquid. Purified antibody supplied in 1x PBS buffer with 0.09% (w/v) sodium azide and 2% sucrose.
Concentration:	lot specific
Purification:	Affinity Purified
Conjugation:	Unconjugated
Storage:	For short term use, store at 2-8°C up to 1 week. For long term storage, store at -20°C in small aliquots to prevent freeze-thaw cycles.
Stability:	Shelf life: one year from despatch.
Predicted Protein Size:	29kDa
Gene Name:	Sad1 and UNC84 domain containing 3
Database Link:	<a href="#">Entrez Gene 256979 Human Q8TAQ9-2</a>
Background:	The function of this protein remains unknown.
Synonyms:	SUNC1



[View online »](#)

Product images:



Host: Rabbit  
Target Name: SUN3  
Sample Tissue: Uterus Tumor Lysate  
Antibody Dilution: 1.0 $\mu$ g/ml

Host: Rabbit  
Target Name: SUN3  
Sample Type: Uterus Tumor lysates  
Antibody Dilution: 1 $\mu$ g/ml