

Product datasheet for **TA357165**

C17orf97 Rabbit Polyclonal Antibody

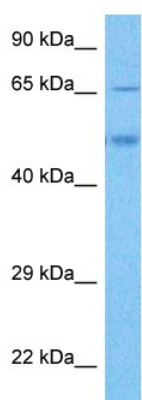
Product data:

Product Type:	Primary Antibodies
Reactivity:	Human
Host:	Rabbit
Clonality:	Polyclonal
Immunogen:	The immunogen is a synthetic peptide directed towards the following sequence GFHPDPEALKGFHTDPNAEEAPENLPYLSKDKGSSSHRQPTSKAECPNLC
Specificity:	Expected reactivity: Dog, Horse, Human, Mouse, Rat Homology: Dog: 92%; Horse: 92%; Human: 100%; Mouse: 100%; Rat: 90%
Formulation:	Liquid. Purified antibody supplied in 1x PBS buffer with 0.09% (w/v) sodium azide and 2% sucrose. <i>Note that this product is shipped as lyophilized powder to China customers.</i>
Concentration:	lot specific
Purification:	Affinity Purified
Conjugation:	Unconjugated
Storage:	For short term use, store at 2-8°C up to 1 week. For long term storage, store at -20°C in small aliquots to prevent freeze-thaw cycles.
Stability:	Shelf life: one year from despatch.
Predicted Protein Size:	50 kDa
Gene Name:	chromosome 17 open reading frame 97
Database Link:	NP_001013694 Entrez Gene 400566 Human Q6ZQX7
Synonyms:	C17orf97



[View online »](#)

Product images:



Host: Rabbit
Target Name: CQ097
Sample Type: Liver Tumor Lysate
Antibody Dilution: 1.0 μ g/ml

Host: Rabbit
Target Name: C17ORF97
Sample Tissue: Human Liver Tumor
Antibody Dilution: 1 μ g/ml