

## Product datasheet for **TA357162**

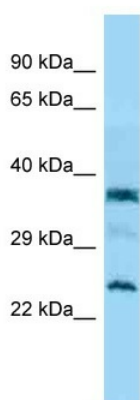
### **C7orf61 Rabbit Polyclonal Antibody**

#### **Product data:**

|                         |   |
|-------------------------|---|
| Product Type:           | Primary Antibodies  |
| Applications:           | WB  |
| Reactivity:             | Human   |
| Host:                   | Rabbit  |
| Clonality:              | Polyclonal  |
| Specificity:            | <b>Expected reactivity:</b> Guinea Pig, Human, Rat<br><b>Homology:</b> Guinea Pig: 86%; Human: 100%; Rat: 79%                           |
| Formulation:            | Liquid. Purified antibody supplied in 1x PBS buffer with 0.09% (w/v) sodium azide and 2% sucrose.                                       |
| Concentration:          | lot specific  |
| Purification:           | Affinity Purified   |
| Conjugation:            | Unconjugated  |
| Storage:                | For short term use, store at 2-8°C up to 1 week. For long term storage, store at -20°C in small aliquots to prevent freeze-thaw cycles. |
| Stability:              | Shelf life: one year from despatch.   |
| Predicted Protein Size: | 24kDa   |
| Gene Name:              | chromosome 7 open reading frame 61  |
| Database Link:          | <a href="#">NP_001004323</a><br><a href="#">Entrez Gene 402573 Human</a><br><a href="#">Q8IZ16</a>                                      |
| Background:             | The function of this protein remains unknown.   |
| Synonyms:               | C7orf61   |



[View online »](#)

**Product images:**

WB Suggested Anti-C7orf61 Antibody  
Titration: 1.0 ug/ml  
Positive Control: Jurkat Whole Cell